

GARDEN DESIGN

442-446 Streatham High Road

Vera Lach
garden designer

LEGEND:

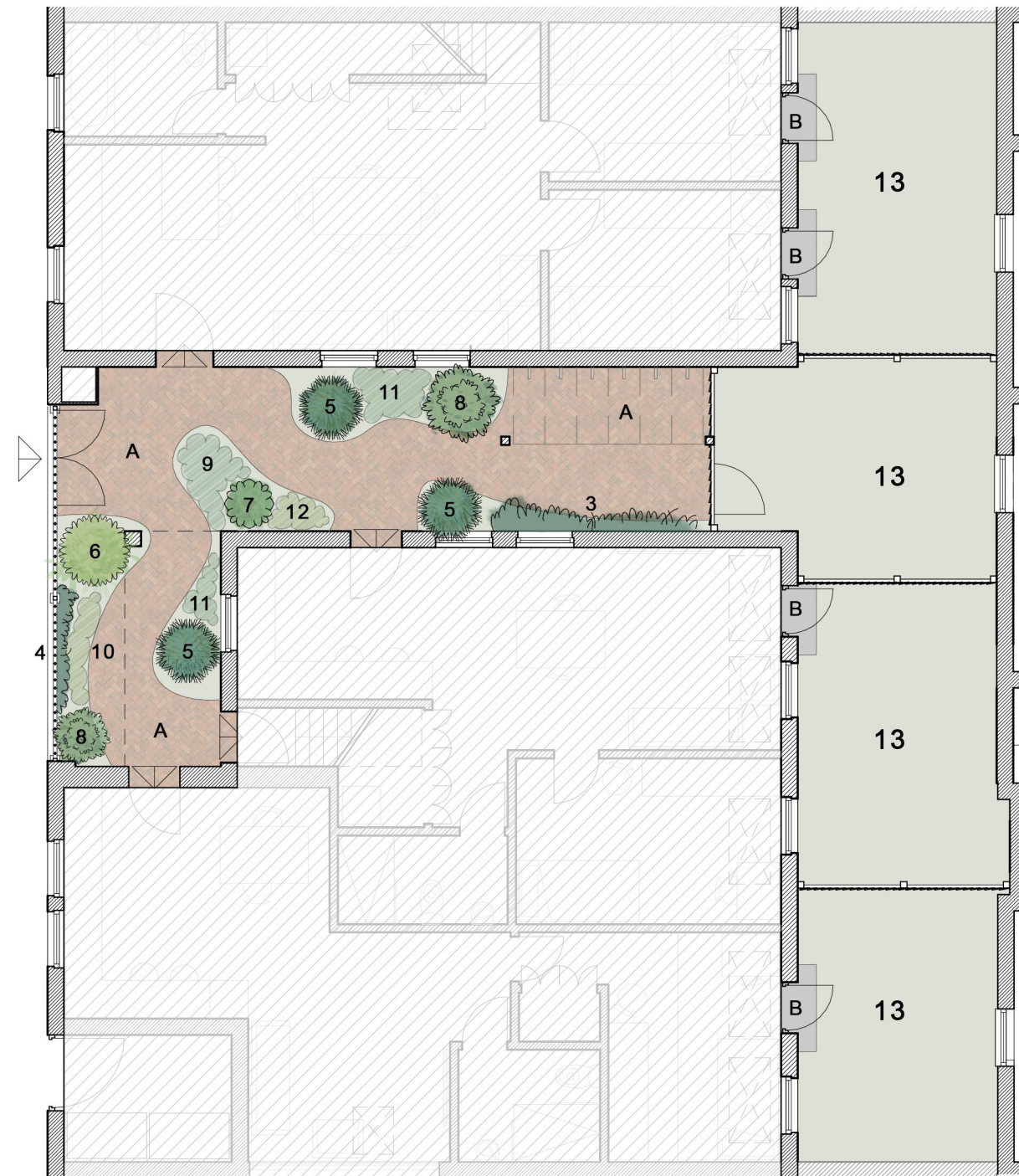
Hard landscaping:

A. Permeable brick paving laid in herringbone pattern

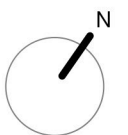
B. Natural portland stone sleeper to the gardens doors

Soft Landscaping:

1. *Osmanthus burkwoodii*
2. *Pittosporum tenuifolium* Silver Sheen
3. *Hydrangea seemanii*
4. *Hedera helix*
5. *Taxus baccata* Yew
6. *Euonymus japonicus* Green Spire
7. *Euonymus fortunei* Emerald Gaiety
8. *Sarcococca confusa* Sweet box
9. *Muehlenbeckia complexa*
10. *Lamium maculatum*
11. *Ajuga reptans*
12. *Dryopteris erythrosora*
13. Shade Tolerant Turf
14. Wildflower mix
15. Sedum mix



Ground Floor Plan



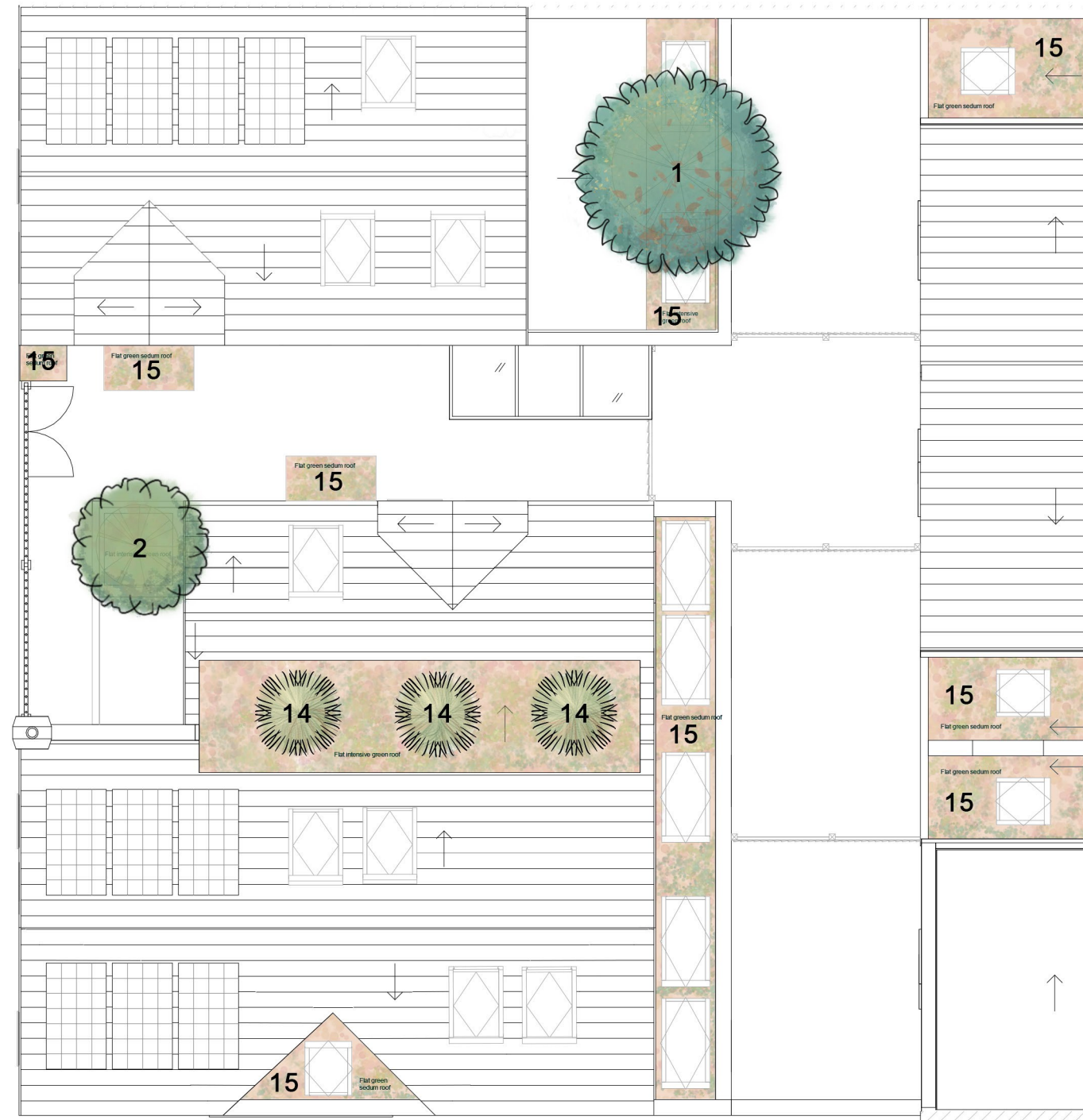
LEGEND:

Hard landscaping:

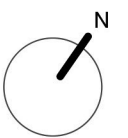
- A. Permeable brick paving laid in herringbone pattern
- B. Natural portland stone sleeper to the gardens doors

Soft Landscaping:

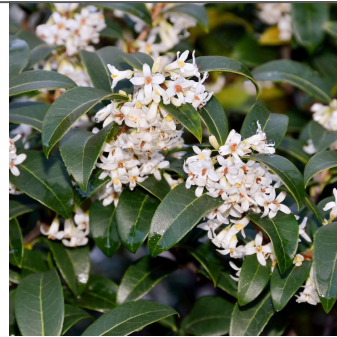
- 1. Osmanthus burkwoodii
- 2. Pittosporum tenuifolium Silver Sheen
- 3. Hydrangea seemanii
- 4. Hedera helix
- 5. Taxus baccata Yew
- 6. Euonymus japonicus Green Spire
- 7. Euonymus fortunei Emerald Gaiety
- 8. Sarcococca confusa Sweet box
- 9. Muehlenbeckia complexa
- 10. Lamium maculatum
- 11. Ajuga reptans
- 12. Dryopteris erythrosora
- 13. Shade Tolerant Turf
- 14. Wildflower mix
- 15. Sedum mix



Roof Plan



Selected Plants



Osmanthus burkwoodii



Pittosporum Silver Sheen



Hydrangea seemannii



Hedera helix Manda's Crested



Hedera helix Glacier



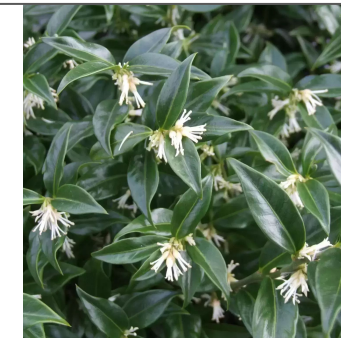
English yew Taxus baccata



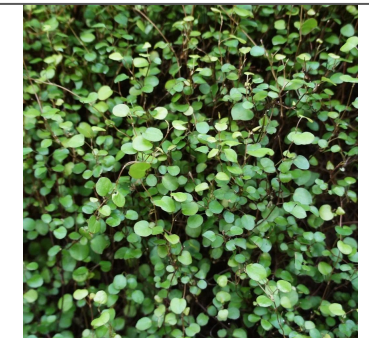
Euonymus japonicus Green Spire



Euonymus fortunei Emerald Gaiety



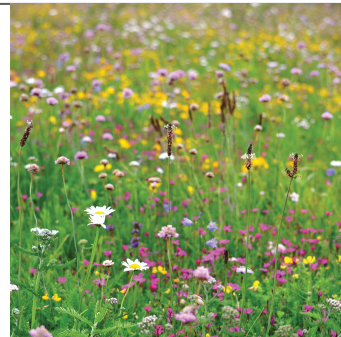
Sarcococca confusa



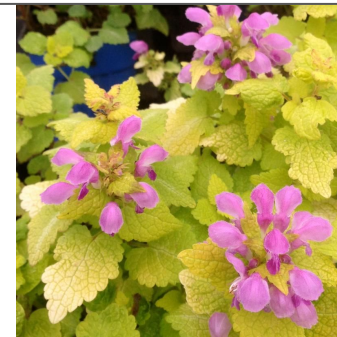
Muehlenbeckia complexa



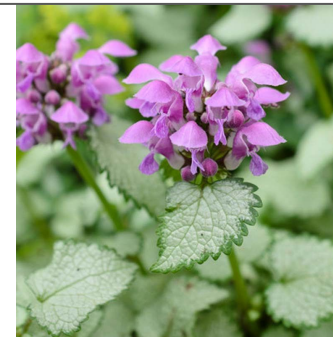
Sedum mix, green roof



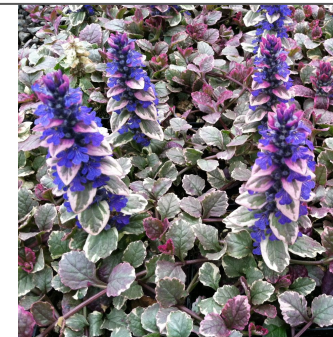
Wildflower mix



Lamium maculatum Aureum



Lamium maculatum Beacon Silver



Ajuga reptans



Ajuga reptans Pink Lightning



Dryopteris erythrosora

Plant List

Evergreens & Structure:

- Osmanthus burkwoodii (evergreen shrub/small-tree)
- Pittosporum tenuifolium Silver Sheen (evergreen shrub)
- Hydrangea seemannii (evergreen climber)
- Hedera helix Manda's Crested or Glacier (evergreen climber)
- Taxus baccata Yew (evergreen topiary)
- Euonymus japonicus Green Spire (evergreen shrub)
- Euonymus fortunei Emerald Gaiety (evergreen shrub/climber)
- Sarcococca confusa Sweet box (evergreen shrub)
- Muehlenbeckia complexa (evergreen ground cover/climber)

Seasonal Blooms & Accents:

- Lamium maculatum Beacon Silver (evergreen ground cover)
- Lamium maculatum Aureum (evergreen ground cover)
- Ajuga reptans Pink Lightning (evergreen ground cover)
- Ajuga reptans Burgundy glow (evergreen ground cover)
- Dryopteris erythrosora (fern)
- Wildflower mix (self seeding annuals & perennials, low-maintenance green roof)
- Sedum mix, green roof (evergreen, low-maintenance)

Private amenity space

- Shade tolerant turf law


garden designer

Maintenance Plan

Spring (March–May)

- Light trimming of evergreen shrubs and climbers to maintain form
- Cut back old fern fronds (*Dryopteris erythrosora*)
- General tidy-up of groundcover plants (e.g. *Ajuga*, *Lamium*)
- Annual mulch application to suppress weeds and retain moisture
- Inspection and servicing of irrigation system

Summer (June–August):

- Optional clip-back of vigorous climbers to prevent overgrowth (ivy)
- Visual inspection for pests/disease (intervention only if needed)
- Light shaping of *Taxus baccata* (late summer)

Autumn (September–November)

- Leaf and debris clearance from communal areas

Automated irrigation system to be provided to the ground floor communal area and terraces.

Recommendations, during the growth season : 1-2 times per week, early morning, 5-10 mins depending on flow rate.