



111 MITCHAM LANE, FURZEDOWN,  
STREATHAM, LONDON, SW16 6LY

*£17,500 Per Annum*



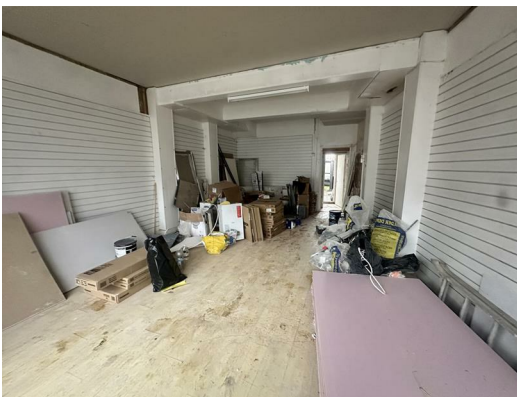
CHRISTOPHER ST. JAMES  
Established 1976

Residential / Commercial / Land & Development

020 8296 1273

[www.csj.eu.com](http://www.csj.eu.com)

[info@csj.eu.com](mailto:info@csj.eu.com)



### Description

Available on a new lease with terms to be agreed by negotiation is this 800 sq ft E class premises comprising main retail space at street level with basement area with kitchen, W/C and additional storage space with good head height.

### Location

111 Mitcham Lane occupies a prominent position in the popular Furzedown area, located between Streatham, Tooting, and Mitcham. This vibrant location benefits from excellent access to local amenities including shops, cafes, convenience stores, and essential services.

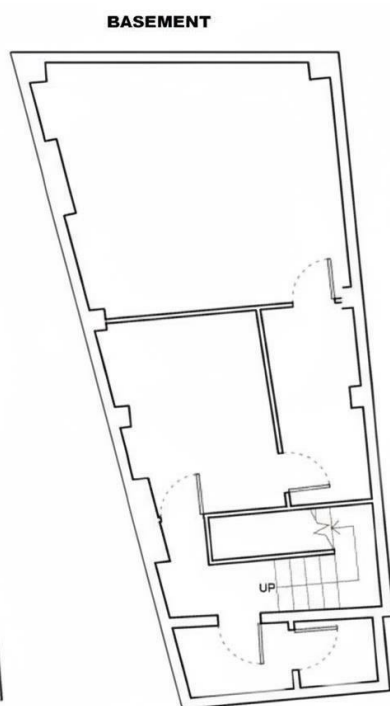
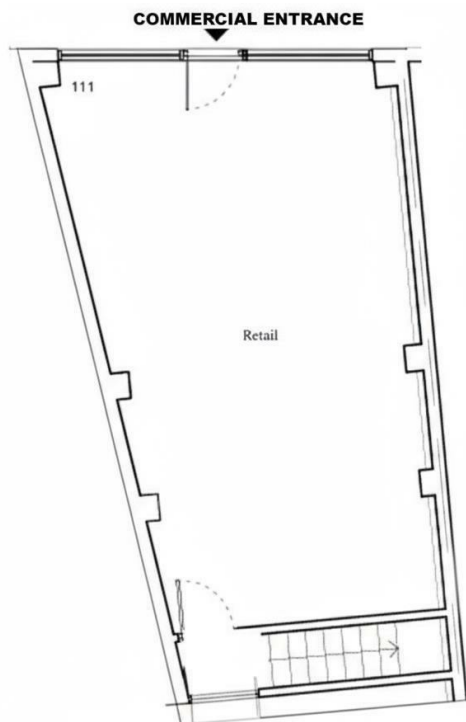
The property is especially well-situated for transport, with Streatham Station and Streatham Common Station both approximately 0.4 miles away—just around a 10–13 minute walk—providing Thameslink and Southern Rail services for swift connections to Central London and surrounding areas. Tooting, Tooting Bec, and Balham Underground stations are all within 1–1.4 miles for additional Northern Line access.

### Terms

Guide rent: £17,500 per annum

### Viewing

Contact CSJ on 020 8296 1270



### THE SMALL PRINT

Christopher St James, our clients and any joint agents give notice that:

- 1) They have no authority to make or give any representations or warranties in relation to the property. These particulars do not form part of any offer or contract and must not be relied upon as statements or representations of fact.
- 2) Any areas, measurements or distances are approximate. The text, photographs and plans are for guidance only and not necessarily comprehensive. It should not be assumed that the property has all necessary planning, building, regulation or other consents and Christopher St James have not tested any services, equipment or facilities. Purchasers must satisfy themselves by inspection or otherwise.

**Christopher St James**  
61 High Street  
Colliers Wood  
London  
SW19 2JF



**CHRISTOPHER ST. JAMES**  
Established 1976

Residential / Commercial / Land & Development

**020 8296 1273**  
**www.csj.eu.com**  
**info@csj.eu.com**