



28 ROWAN ROAD, STREATHAM, LONDON,  
SW16 5JL

*£2,500 Per Month*



**CHRISTOPHER ST. JAMES**  
Established 1976

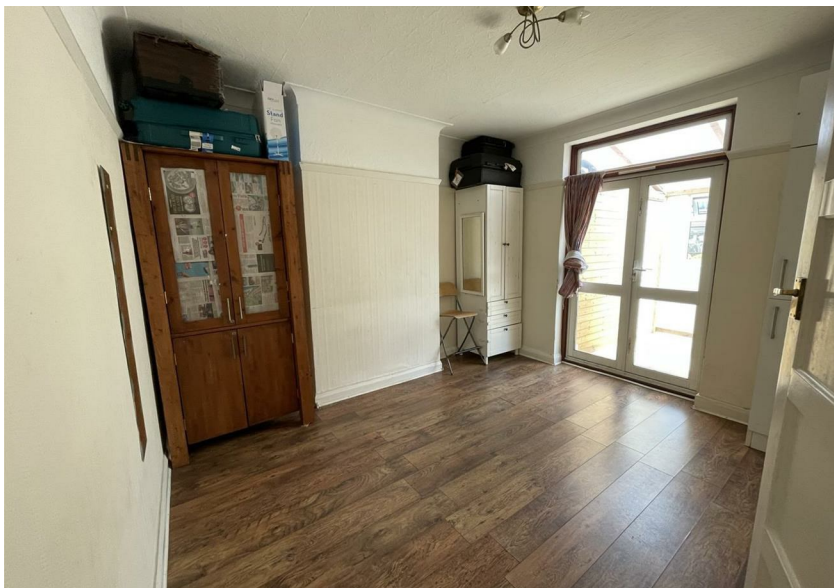
Residential / Commercial / Land & Development

020 8296 1270

[www.csj.eu.com](http://www.csj.eu.com)

[lettings@csj.eu.com](mailto:lettings@csj.eu.com)





## Description

Three bedroom property located on a residential street with free on street parking. This property boasts a spacious front room, double bedroom, kitchen and WC on the ground floor as well as access to a large private garden. The first floor includes two double bedrooms and a smaller room for storage as well as family bathroom. Unfurnished. Available 27th July 2025.

## Location

Nearest rail stations: Norbury and Mitcham Eastfield's Train station.

## VIEWINGS

Viewings available daily

Please contact our residential team on 020 8296 1270 alternatively by email [lettings@csj.eu.com](mailto:lettings@csj.eu.com)

Energy Efficiency Rating		
	Current	Potential
Very energy efficient - lower running costs		
(92 plus) A		
(81-91) B		
(69-80) C		
(55-68) D		
(39-54) E		
(21-38) F		
(1-20) G		
Not energy efficient - higher running costs		
England & Wales		
	EU Directive 2002/91/EC	



## THE SMALL PRINT

Christopher St James, our clients and any joint agents give notice that:

- 1) They have no authority to make or give any representations or warranties in relation to the property. These particulars do not form part of any offer or contract and must not be relied upon as statements or representations of fact.
- 2) Any areas, measurements or distances are approximate. The text, photographs and plans are for guidance only and not necessarily comprehensive. It should not be assumed that the property has all necessary planning, building, regulation or other consents and Christopher St James have not tested any services, equipment or facilities. Purchasers must satisfy themselves by inspection or otherwise.

**Christopher St James**  
61 High Street Colliers  
London  
SW19 2JF



**CHRISTOPHER ST. JAMES**  
Established 1976

Residential / Commercial / Land & Development

**020 8296 1270**  
**[www.csj.eu.com](http://www.csj.eu.com)**  
**[lettings@csj.eu.com](mailto:lettings@csj.eu.com)**



**CHRISTOPHER ST. JAMES**  
**Established 1976**

Residential / Commercial / Land & Development