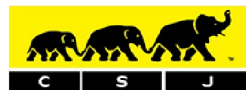




**46 PALESTINE GROVE, COLLIERS WOOD,
LONDON, SURREY, SW19 2QN**

Offers Invited £550,000 Freehold



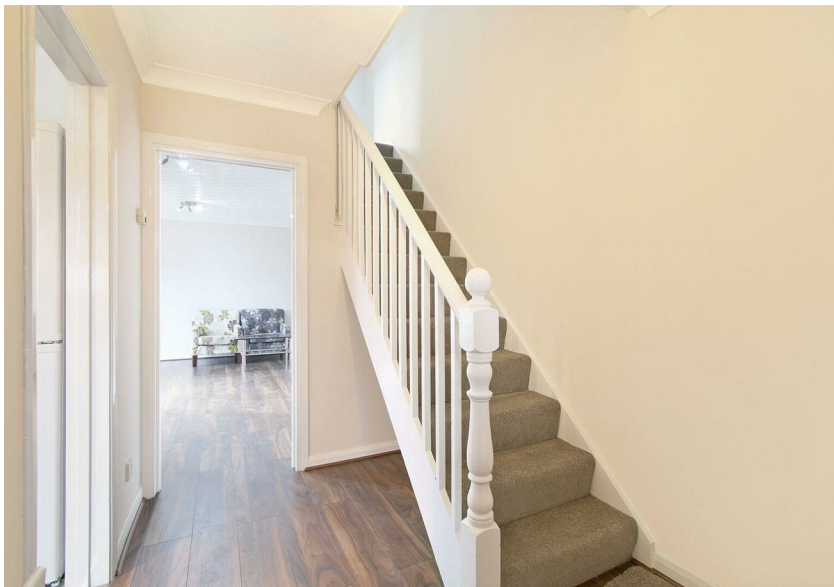
CHRISTOPHER ST. JAMES
Established 1976

Residential / Commercial / Land & Development

020 8296 1270

www.csj.eu.com

info@csj.eu.com



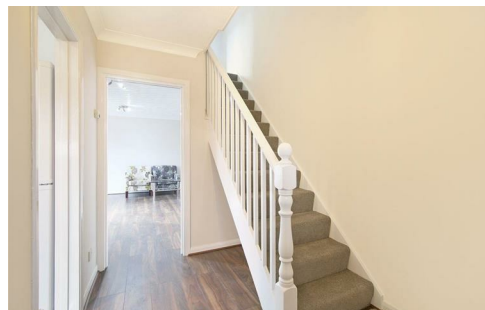
Description

End terrace house with private garden and off street parking
Comprises entrance hall, reception room and kitchen to ground floor with two double bedrooms and family bathroom to first floor



VIEWINGS

Viewings available daily
Please contact our residential team on 020 8296 1270 alternatively by email
info@csj.eu.com



THE SMALL PRINT

Christopher St James, our clients and any joint agents give notice that:

- 1) They have no authority to make or give any representations or warranties in relation to the property. These particulars do not form part of any offer or contract and must not be relied upon as statements or representations of fact.
- 2) Any areas, measurements or distances are approximate. The text, photographs and plans are for guidance only and not necessarily comprehensive. It should not be assumed that the property has all necessary planning, building, regulation or other consents and Christopher St James have not tested any services, equipment or facilities. Purchasers must satisfy themselves by inspection or otherwise.

Christopher St James
61 High Street Colliers
London
SW19 2JF



CHRISTOPHER ST. JAMES
Established 1976

Residential / Commercial / Land & Development

020 8296 1270
www.csj.eu.com
info@csj.eu.com



CHRISTOPHER ST. JAMES
Established 1976

Residential / Commercial / Land & Development