



**LAND AT, 6 DETILLENES LANE, OXTED,
SURREY, RH8 0DJ**

£575,000 Freehold



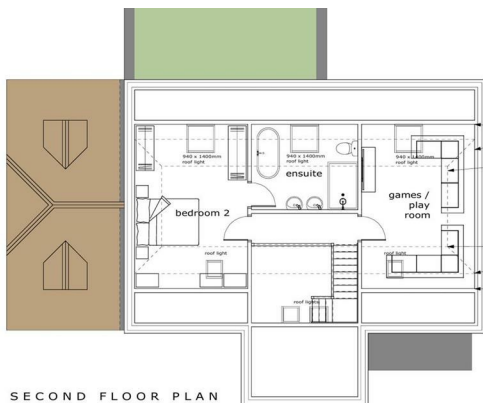
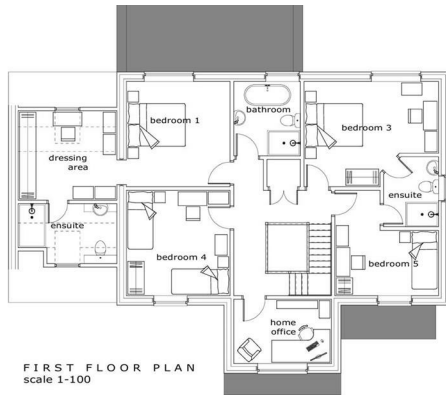
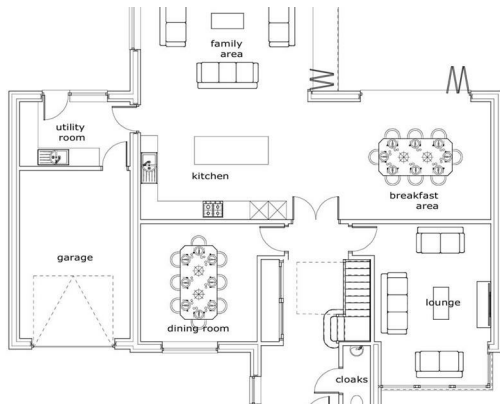
CHRISTOPHER ST. JAMES
Established 1976

Residential / Commercial / Land & Development

020 8296 1273

www.csj.eu.com

info@csj.eu.com



Description

Consented single build plot for sale

Of interest to self build home buyers (package deal available) and developers alike.

The land is available immediately with planning granted to construct a detached 3,450 sq ft five bedroom family home with integral garage

Location

Detillens Lane is situated in a desirable residential area of Oxted, Surrey, just 0.2 miles from the town centre. Oxted railway station, about 0.5 miles away, offers direct services to London Bridge and Victoria in around 40 minutes. The property is conveniently located near the A25, providing easy access to the M25 motorway (Junction 6) approximately 3.5 miles away, facilitating quick connections to Gatwick Airport.

Oxted town centre is within walking distance and features a variety of shops, restaurants, and services including Morrisons and Waitrose supermarkets, Everyman Cinema, Tandridge Leisure Centre, Oxted Library, and the Barn Theatre.

The area is well-served by both state and independent schools. St Mary's CofE Primary School (Ofsted rated "Good") is 0.3 miles away, while Oxted School (Ofsted rated "Good") is 0.8 miles from the property. Other nearby options include Limpsfield CofE Infant School, Hazelwood School, and Limpsfield Grange School.

This location combines the tranquillity of a semi-rural setting with easy access to urban amenities and excellent educational options, making it an ideal spot for families and commuters alike.

Data Room

Further information including plans found in our data room

Access code: oxted

Terms

Guide Price £575,000

Viewing

By appointment only - Call CSJ 020 8296 1270

THE SMALL PRINT

Christopher St James, our clients and any joint agents give notice that:

- 1) They have no authority to make or give any representations or warranties in relation to the property. These particulars do not form part of any offer or contract and must not be relied upon as statements or representations of fact.
- 2) Any areas, measurements or distances are approximate. The text, photographs and plans are for guidance only and not necessarily comprehensive. It should not be assumed that the property has all necessary planning, building, regulation or other consents and Christopher St James have not tested any services, equipment or facilities. Purchasers must satisfy themselves by inspection or otherwise.