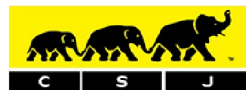




70 CHRISTCHURCH ROAD, COLLIERS WOOD,
LONDON, SW19 2PB

£2,500 PCM



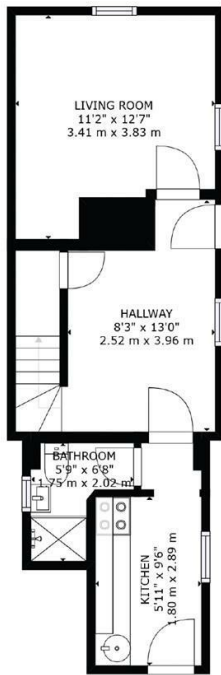
CHRISTOPHER ST. JAMES
Established 1976

Residential / Commercial / Land & Development

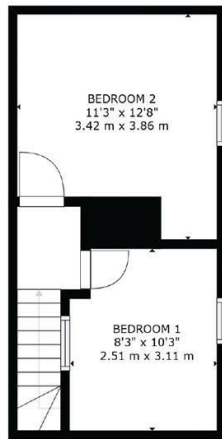
020 8296 1273

www.csj.eu.com

info@csj.eu.com



FLOOR 1



FLOOR 2

GROSS INTERNAL AREA
 FLOOR 1: 366 sq. ft./34 m², FLOOR 2: 262 sq. ft./24 m²
 TOTAL: 628 sq. ft./58 m²
 SIZES AND DIMENSIONS ARE APPROXIMATE, ACTUAL MAY VARY.

Description

Large forecourt (E Class) approx. 3,350sqft with refurbished 2 bedroom vacant house. Available Now.

Location

The property occupies a prominent corner position on A24 Christchurch Road at its junction with Christchurch Close just 1 minute from Colliers Wood Underground Station.

Services

Not checked by CSJ

Terms

Available with flexible terms subject to agreement

Rent : £30,000p/a

VAT

Not applicable

Viewings

Contact Sole Agents
 Christopher St James
 020 8296 1273



THE SMALL PRINT

Christopher St James, our clients and any joint agents give notice that:

- 1) They have no authority to make or give any representations or warranties in relation to the property. These particulars do not form part of any offer or contract and must not be relied upon as statements or representations of fact.
- 2) Any areas, measurements or distances are approximate. The text, photographs and plans are for guidance only and not necessarily comprehensive. It should not be assumed that the property has all necessary planning, building, regulation or other consents and Christopher St James have not tested any services, equipment or facilities. Purchasers must satisfy themselves by inspection or otherwise.

Christopher St James
 61 High Street
 Colliers Wood
 London
 SW19 2JF



CHRISTOPHER ST. JAMES
 Established 1976

Residential / Commercial / Land & Development

020 8296 1273
www.csj.eu.com
info@csj.eu.com