

**GENERAL NOTES**

1. ALL DIMENSIONS ARE IN MILLIMETERS UNLESS STATED.
2. THIS DRAWING CONTAINS COLOURED LINES/ INFORMATION THAT MAY NOT BE CLEAR IF REPRODUCED IN BLACK AND WHITE.
3. DO NOT SCALE FROM THIS DRAWING EXCEPT FOR PLANNING PURPOSES.
4. THE AREAS ON THE DRAWING HAVE BEEN MEASURED DIRECTLY FROM A CAD DRAWING AND HAVE NO TOLERANCES ADDED OR SUBTRACTED.
5. THIS DRAWING AND INFORMATION DISPLAYED IS THE CONFIDENTIAL PROPERTY OF FLOWERKITTLE ARCHITECTS LTD AND SHALL NOT BE COPIED OR USED FOR ANY PURPOSE WITHOUT WRITTEN CONSENT FROM THE COMPANY

**GENERAL ARRANGEMENT NOTES:**

1. This drawing is to be read in conjunction with the relevant architects/ Engineer's drawings, specifications and CDM documentation.
2. Refer to Employer's Requirements for details of the Contractor's Design Portion.
3. It is the contractors responsibility to highlight to the relevant parties any discrepancy held within this drawing prior to the commencement of any works related there to.
4. All levels and setting out information to be confirmed on site before proceeding
5. The drawings and details are prepared using the information available and may be at variance with hidden historic fabric. Report any variations or differences found during the work to the architect and engineer

**GENERAL ARRANGEMENT KEY**

	Existing fabric
	Proposed fabric
	Site boundary
	Root Protection Area (RPA) Refer to Arboriculturist's information - New services MUST be routed to avoid all RPAs of retained trees on site and within nearby sites. - Inspection chambers must also be sited outside the RPAs of any nearby trees

A	PK	FK	For Information	22.05.24
/	PK	FK	For Information	03.04.24
REV	DRWN	CHECK	REV COMMENTS	ISSUE DATE

**FlowerKittle architects**  
 T - +44 (0)1252 597 147 E - info@flowerkittle.com  
 A - Talbot House, 34 Staple Gardens, Winchester, SO23 8SR

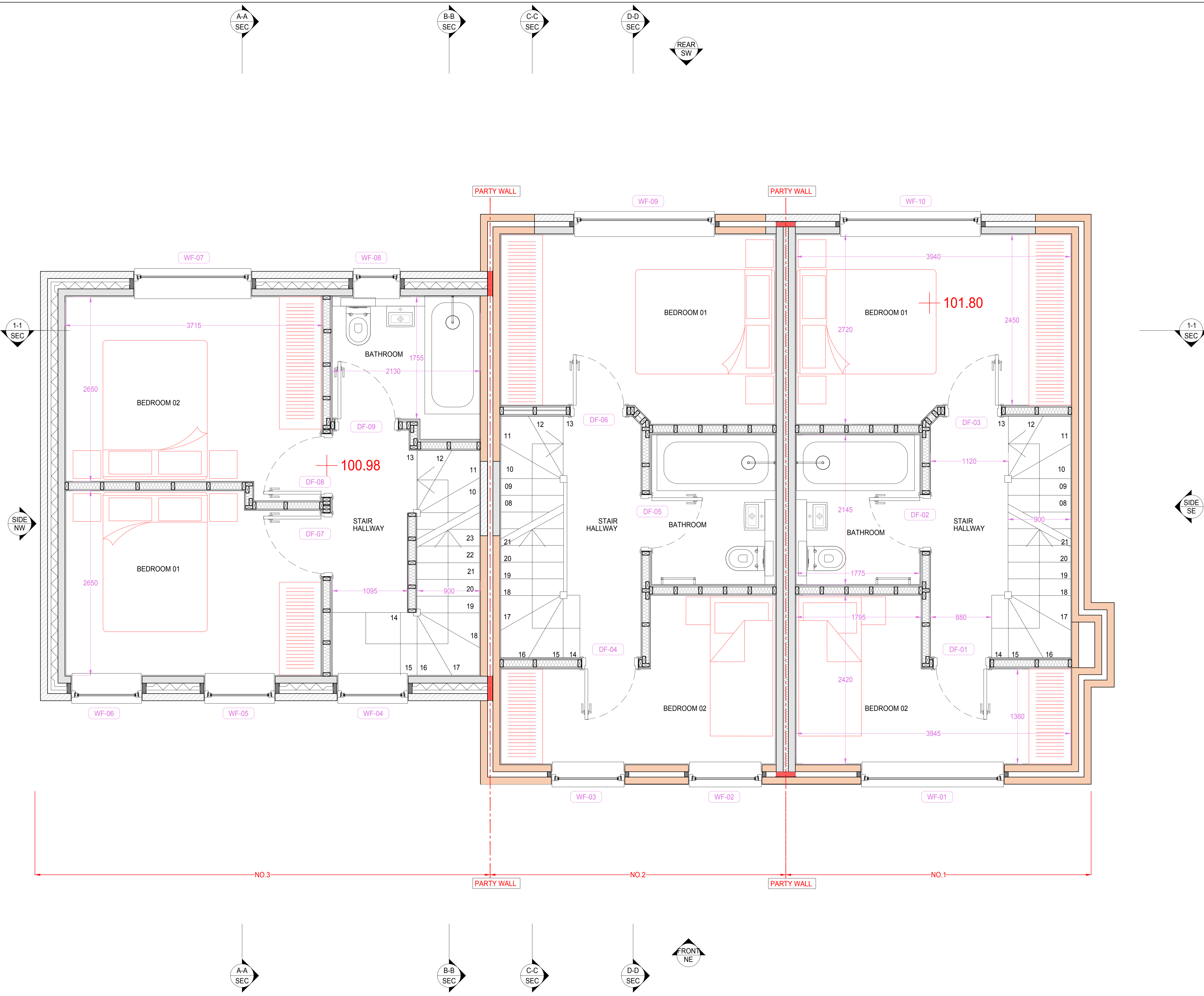
Project Title  
**1a Locke King Road, KT13 0SY**

Drawing Title  
**Ground Floor Plan Proposed**

Scale  
 1:50 @A3  
 1:25 @A1

Drawing Number  
**2305(00)10** Revision  
**A**

Drawing Status  
**FOR INFORMATION**



- GENERAL NOTES**
1. ALL DIMENSIONS ARE IN MILLIMETERS UNLESS STATED.
  2. THIS DRAWING CONTAINS COLOURED LINES/ INFORMATION THAT MAY NOT BE CLEAR IF REPRODUCED IN BLACK AND WHITE.
  3. DO NOT SCALE FROM THIS DRAWING EXCEPT FOR PLANNING PURPOSES.
  4. THE AREAS ON THE DRAWING HAVE BEEN MEASURED DIRECTLY FROM A CAD DRAWING AND HAVE NO TOLERANCES ADDED OR SUBTRACTED.
  5. THIS DRAWING AND INFORMATION DISPLAYED IS THE CONFIDENTIAL PROPERTY OF FLOWERKITTLE ARCHITECTS LTD AND SHALL NOT BE COPIED OR USED FOR ANY PURPOSE WITHOUT WRITTEN CONSENT FROM THE COMPANY

- GENERAL ARRANGEMENT NOTES:**
1. This drawing is to be read in conjunction with the relevant architects/ Engineer's drawings, specifications and CDM documentation.
  2. Refer to Employer's Requirements for details of the Contractor's Design Portion.
  3. It is the contractors responsibility to highlight to the relevant parties any discrepancy held within this drawing prior to the commencement of any works related there to.
  4. All levels and setting out information to be confirmed on site before proceeding
  5. The drawings and details are prepared using the information available and may be at variance with hidden historic fabric. Report any variations or differences found during the work to the architect and engineer

**GENERAL ARRANGEMENT KEY**

	Existing fabric		Proposed fabric
	Site boundary		
	Root Protection Area (RPA) Refer to Arboriculturist's information - New services MUST be routed to avoid all RPAs of retained trees on site and within nearby sites. - Inspection chambers must also be sited outside the RPAs of any nearby trees		

A	PK	FK	For Information	22.05.24
/	PK	FK	For Information	03.04.24
REV	DRWN	CHECK	REV COMMENTS	ISSUE DATE

**FlowerKittle**  
architects

T - +44 (0)1252 597 147    E - info@flowerkittle.com  
A - Talbot House, 34 Staple Gardens, Winchester, SO23 8SR

Project Title  
1a Locke King Road,  
KT13 0SY

Drawing Title  
First Floor Plan  
Proposed

Scale  
1:50 @A3  
1:25 @A1

Drawing Number  
2305(00)11

Revision  
A

Drawing Status  
**FOR INFORMATION**

A-A  
SEC

B-B  
SEC

C-C  
SEC

D-D  
SEC

REAR  
SW

BUILDINGS CUT AT 1.5M ABOVE  
FINISHED FLOOR LEVEL

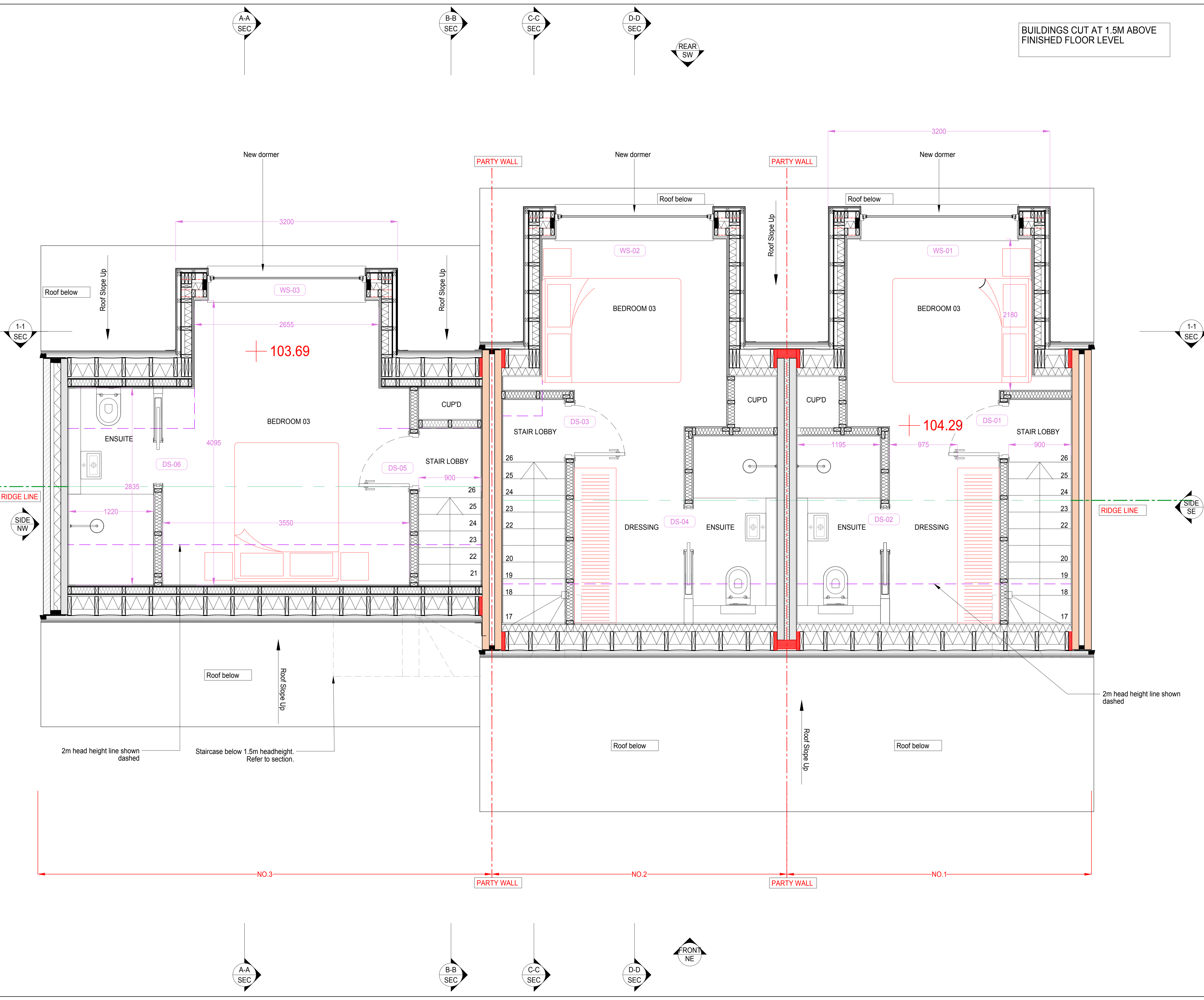
- GENERAL NOTES**
1. ALL DIMENSIONS ARE IN MILLIMETERS UNLESS STATED.
  2. THIS DRAWING CONTAINS COLOURED LINES/ INFORMATION THAT MAY NOT BE CLEAR IF REPRODUCED IN BLACK AND WHITE.
  3. DO NOT SCALE FROM THIS DRAWING EXCEPT FOR PLANNING PURPOSES.
  4. THE AREAS ON THE DRAWING HAVE BEEN MEASURED DIRECTLY FROM A CAD DRAWING AND HAVE NO TOLERANCES ADDED OR SUBTRACTED.
  5. THIS DRAWING AND INFORMATION DISPLAYED IS THE CONFIDENTIAL PROPERTY OF FLOWERKITTLE ARCHITECTS LTD AND SHALL NOT BE COPIED OR USED FOR ANY PURPOSE WITHOUT WRITTEN CONSENT FROM THE COMPANY

**GENERAL ARRANGEMENT NOTES:**

1. This drawing is to be read in conjunction with the relevant architects/ Engineer's drawings, specifications and CDM documentation.
2. Refer to Employer's Requirements for details of the Contractor's Design Portion.
3. It is the contractor's responsibility to highlight to the relevant parties any discrepancy held within this drawing prior to the commencement of any works related there to.
4. All levels and setting out information to be confirmed on site before proceeding
5. The drawings and details are prepared using the information available and may be at variance with hidden historic fabric. Report any variations or differences found during the work to the architect and engineer

**GENERAL ARRANGEMENT KEY**

	Existing fabric		Proposed fabric
	Site boundary		
	Root Protection Area (RPA) Refer to Arboriculturist's information - New services MUST be routed to avoid all RPAs of retained trees on site and within nearby sites. - Inspection chambers must also be sited outside the RPAs of any nearby trees		



1-1  
SEC

1-1  
SEC

1-1  
SEC

SIDE  
NW

RIDGE LINE

SIDE  
SE

RIDGE LINE

SIDE  
NW

A	PK	FK	For Information	22.05.24
/	PK	FK	For Information	03.04.24
REV	DRWN	CHECK	REV COMMENTS	ISSUE DATE

**FlowerKittle**  
architects

T - +44 (0)1252 597 147 E - info@flowerkittle.com  
A - Talbot House, 34 Staple Gardens, Winchester, SO23 8SR

Project Title  
1a Locke King Road,  
KT13 0SY

Drawing Title  
Second Floor Plan  
Proposed

Scale  
1:50 @A3  
1:25 @A1

Drawing Number  
2305(00)12

Revision  
A

Drawing Status  
**FOR INFORMATION**

A-A  
SEC

B-B  
SEC

C-C  
SEC

D-D  
SEC

FRONT  
NE

2m head height line shown dashed

Staircase below 1.5m headheight. Refer to section.

2m head height line shown dashed

NO.3

NO.2

NO.1

PARTY WALL

PARTY WALL

A-A  
SEC

B-B  
SEC

C-C  
SEC

D-D  
SEC

FRONT  
NE

A-A  
SEC

B-B  
SEC

C-C  
SEC

D-D  
SEC

REAR  
SW

A-A  
SEC

B-B  
SEC

C-C  
SEC

D-D  
SEC

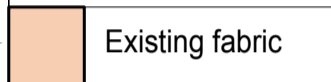
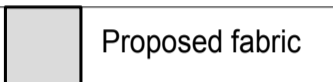


FRONT  
NE

- GENERAL NOTES**
1. ALL DIMENSIONS ARE IN MILLIMETERS UNLESS STATED.
  2. THIS DRAWING CONTAINS COLOURED LINES/ INFORMATION THAT MAY NOT BE CLEAR IF REPRODUCED IN BLACK AND WHITE.
  3. DO NOT SCALE FROM THIS DRAWING EXCEPT FOR PLANNING PURPOSES.
  4. THE AREAS ON THE DRAWING HAVE BEEN MEASURED DIRECTLY FROM A CAD DRAWING AND HAVE NO TOLERANCES ADDED OR SUBTRACTED.
  5. THIS DRAWING AND INFORMATION DISPLAYED IS THE CONFIDENTIAL PROPERTY OF FLOWERKITTLE ARCHITECTS LTD AND SHALL NOT BE COPIED OR USED FOR ANY PURPOSE WITHOUT WRITTEN CONSENT FROM THE COMPANY

**GENERAL ARRANGEMENT NOTES:**

1. This drawing is to be read in conjunction with the relevant architects/ Engineer's drawings, specifications and CDM documentation.
2. Refer to Employer's Requirements for details of the Contractor's Design Portion.
3. It is the contractors responsibility to highlight to the relevant parties any discrepancy held within this drawing prior to the commencement of any works related there to.
4. All levels and setting out information to be confirmed on site before proceeding
5. The drawings and details are prepared using the information available and may be at variance with hidden historic fabric. Report any variations or differences found during the work to the architect and engineer

**GENERAL ARRANGEMENT KEY**

	Existing fabric		Proposed fabric
	Site boundary		
	Root Protection Area (RPA) Refer to Arboriculturist's information		
	<ul style="list-style-type: none"> <li>- New services MUST be routed to avoid all RPAs of retained trees on site and within nearby sites.</li> <li>- Inspection chambers must also be sited outside the RPAs of any nearby trees</li> </ul>		

A	PK	FK	For Information	22.05.24
/	PK	DF	For Information	03.04.24
REV	DRWN	CHECK	REV COMMENTS	ISSUE DATE

**FlowerKittle**  
architects

T - +44 (0)1252 597 147 E - info@flowerkittle.com  
A - Talbot House, 34 Staple Gardens, Winchester, SO23 8SR

Project Title  
**1a Locke King Road,  
KT13 0SY**

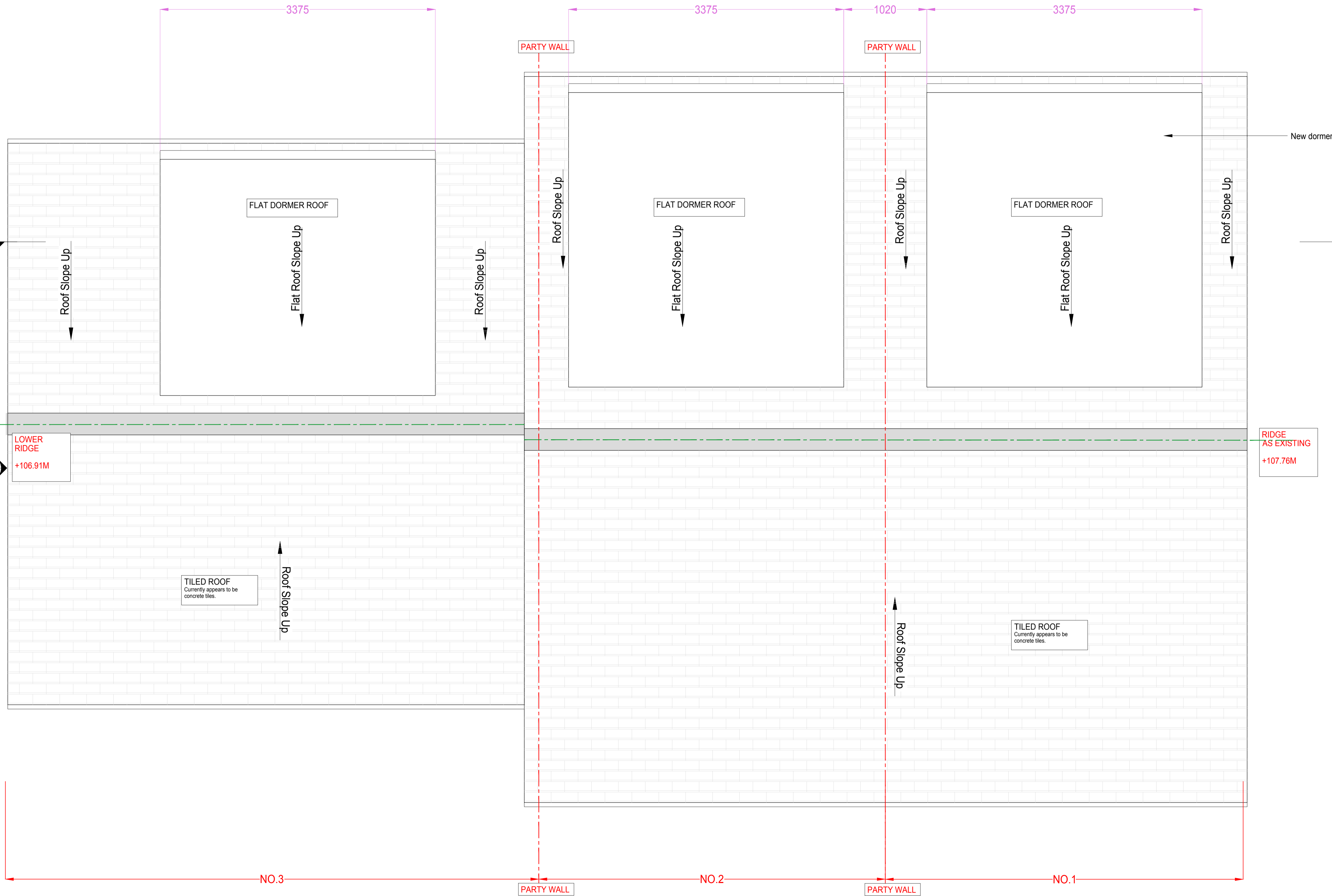
Drawing Title  
**Roof Plan  
Proposed**

Scale  
1:50 @A3  
1:25 @A1

Drawing Number  
**2305(00)12**

Revision  
**A**

Drawing Status  
**FOR INFORMATION**



**PERMITTED DEVELOPMENT: DORMER CALCULATION**

"To be permitted development any additional roof space created must not increase the volume of the original roof space of the house by more than 40 cubic metres for terraced houses and 50 cubic metres for semi-detached and detached houses".

HOUSE 01 DORMER - 16.2sqm  
HOUSE 02 DORMER - 16.2sqm  
HOUSE 03 DORMER - 11.2sqm

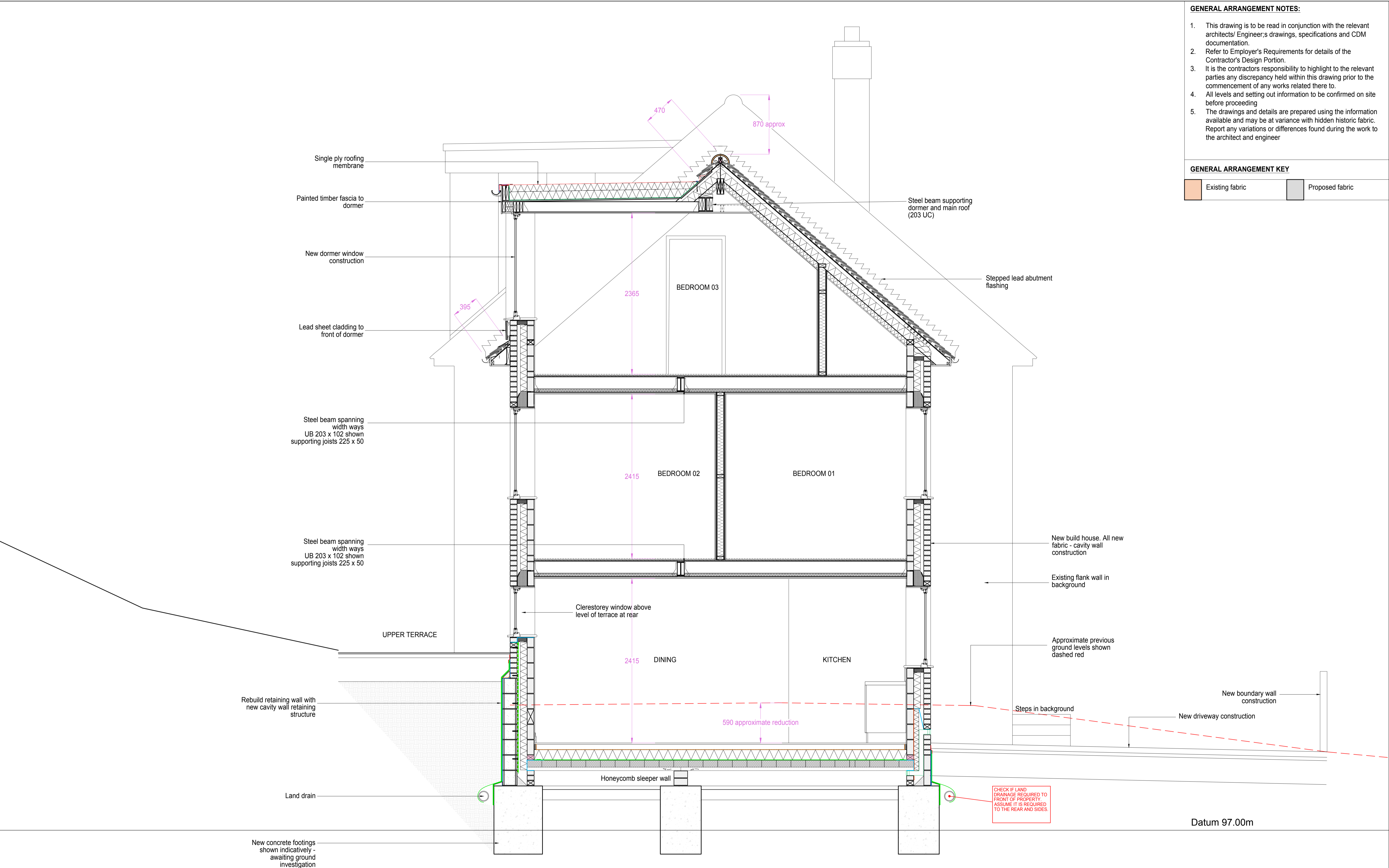
**\*\*NEED TO CHECK WHETHER ENLARGEMENT WOULD BE DEEMED TO OVERHANG THE OUTER FACE OF THE WALL OF THE ORIGINAL HOUSE. MAY NEED TO PULL THEM BACK SLIGHTLY\*\***

**GENERAL ARRANGEMENT NOTES:**

1. This drawing is to be read in conjunction with the relevant architects/ Engineer's drawings, specifications and CDM documentation.
2. Refer to Employer's Requirements for details of the Contractor's Design Portion.
3. It is the contractor's responsibility to highlight to the relevant parties any discrepancy held within this drawing prior to the commencement of any works related there to.
4. All levels and setting out information to be confirmed on site before proceeding
5. The drawings and details are prepared using the information available and may be at variance with hidden historic fabric. Report any variations or differences found during the work to the architect and engineer

**GENERAL ARRANGEMENT KEY**

- Existing fabric
- Proposed fabric



**FlowerKittle**  
architects

A - Talbot House,  
34 Staple Gardens,  
Winchester, SO23 8SR

T - +44 (0) 1252 597 147  
E - info@flowerkittle.com

Project Title  
1a Locke King Road  
KT13 0SY

Drawing Title  
Section A-A\_House 03  
Proposed

Scale  
1:50 @A3  
1:25 @A1

Drawing Number  
2305(00)20

Drawing Status

FOR INFORMATION

Revision  
A

REV	DRWN	CHECK	REV COMMENTS	ISSUE DATE
/	PK	FK	For Information	03.04.24
A	PK	FK	For Information	22.05.24

**GENERAL NOTES**

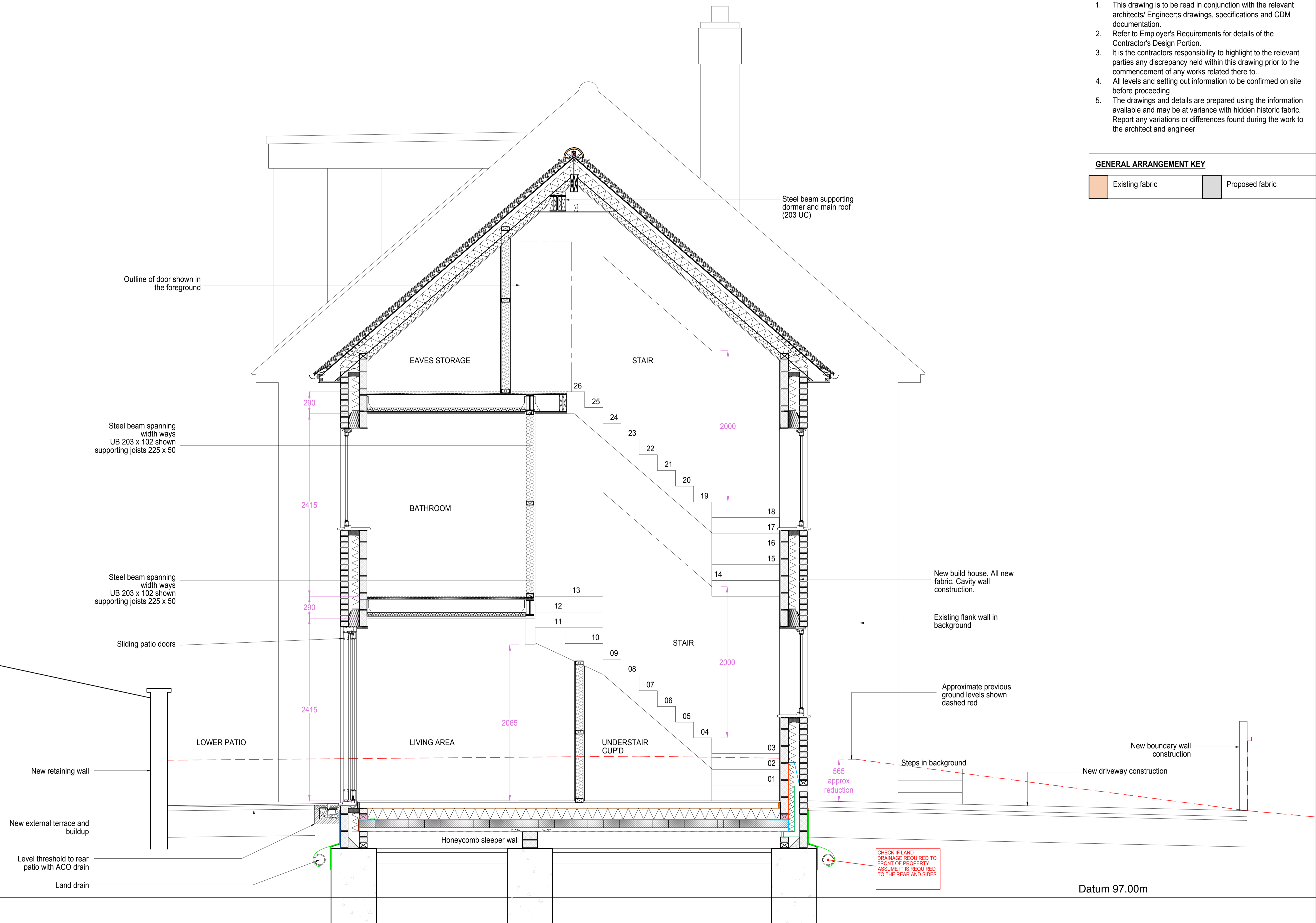
1. ALL DIMENSIONS ARE IN MILLIMETERS UNLESS STATED.
2. THIS DRAWING CONTAINS COLOURED LINES/ INFORMATION THAT MAY NOT BE CLEAR IF REPRODUCED IN BLACK AND WHITE. DO NOT SCALE FROM THIS DRAWING EXCEPT FOR PLANNING PURPOSES.
3. THE AREAS ON THE DRAWING HAVE BEEN MEASURED DIRECTLY FROM A CAD DRAWING AND HAVE NO TOLERANCES ADDED OR SUBTRACTED.
4. THIS DRAWING AND INFORMATION DISPLAYED IS THE CONFIDENTIAL PROPERTY OF FLOWERKITTLE ARCHITECTS LTD AND SHALL NOT BE COPIED OR USED FOR ANY PURPOSE WITHOUT WRITTEN CONSENT FROM THE COMPANY

**GENERAL ARRANGEMENT NOTES:**

1. This drawing is to be read in conjunction with the relevant architects/ Engineer's drawings, specifications and CDM documentation.
2. Refer to Employer's Requirements for details of the Contractor's Design Portion.
3. It is the contractors responsibility to highlight to the relevant parties any discrepancy held within this drawing prior to the commencement of any works related there to.
4. All levels and setting out information to be confirmed on site before proceeding
5. The drawings and details are prepared using the information available and may be at variance with hidden historic fabric. Report any variations or differences found during the work to the architect and engineer

**GENERAL ARRANGEMENT KEY**

- Existing fabric
- Proposed fabric



**FlowerKittle**  
architects

A - Talbot House,  
34 Staple Gardens,  
Winchester, SO23 8SR

T - +44 (0) 1252 597 147  
E - info@flowerkittle.com

Project Title  
1a Locke King Road  
KT13 0SY

Drawing Title  
Section B-B\_House 03  
Proposed

Scale  
1:50 @A3  
1:25 @A1

Drawing Number  
2305(00)21

Drawing Status

**FOR INFORMATION**

Revision  
**A**

REV	DRWN	CHECK	REV COMMENTS	ISSUE DATE
/	PK	FK	For Information	03.04.24
A	PK	FK	For Information	22.05.24

**GENERAL NOTES**

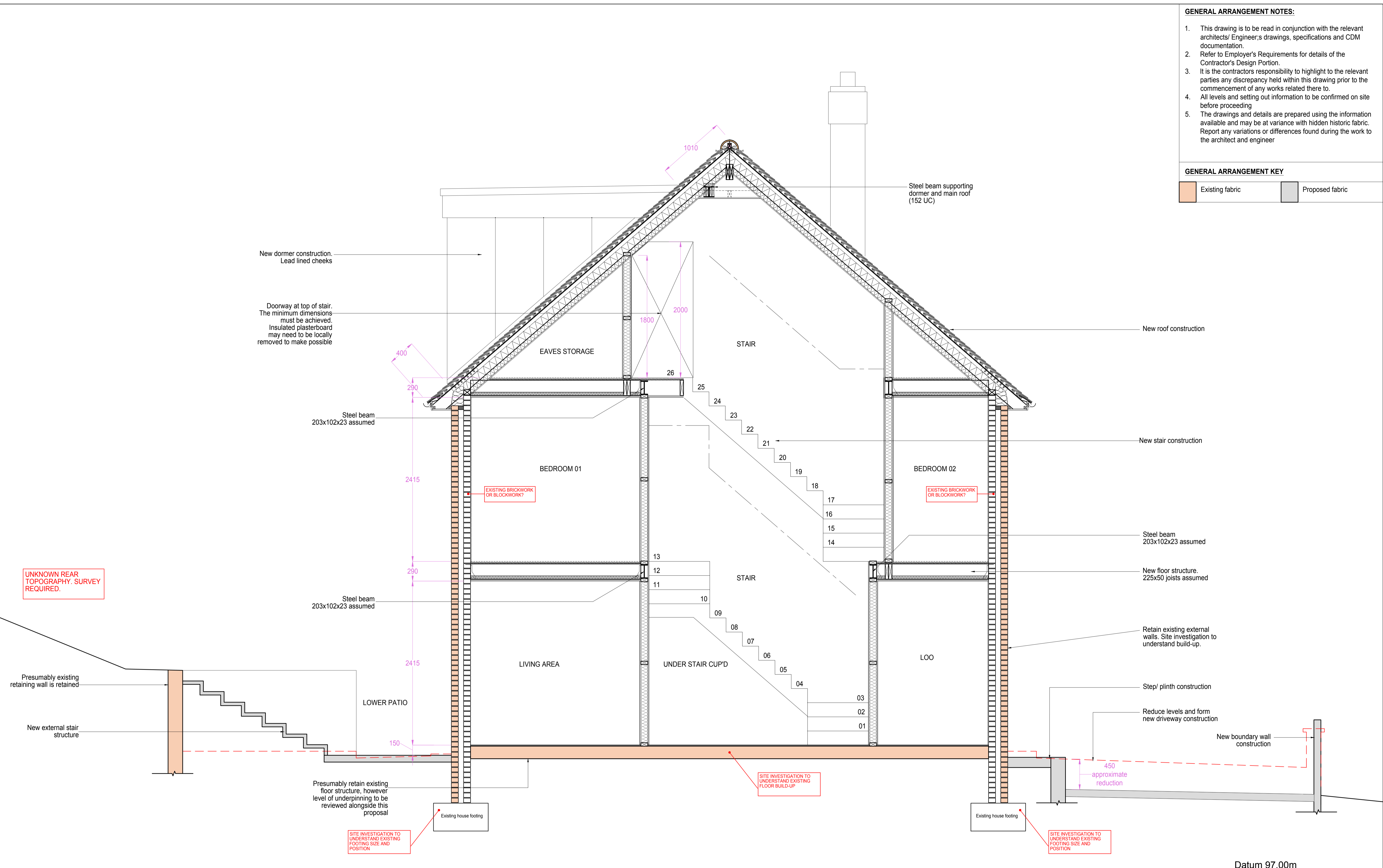
1. ALL DIMENSIONS ARE IN MILLIMETERS UNLESS STATED.
2. THIS DRAWING CONTAINS COLOURED LINES/ INFORMATION THAT MAY NOT BE CLEAR IF REPRODUCED IN BLACK AND WHITE. DO NOT SCALE FROM THIS DRAWING EXCEPT FOR PLANNING PURPOSES.
3. THE AREAS ON THE DRAWING HAVE BEEN MEASURED DIRECTLY FROM A CAD DRAWING AND HAVE NO TOLERANCES ADDED OR SUBTRACTED.
4. THIS DRAWING AND INFORMATION DISPLAYED IS THE CONFIDENTIAL PROPERTY OF FLOWERKITTLE ARCHITECTS LTD AND SHALL NOT BE COPIED OR USED FOR ANY PURPOSE WITHOUT WRITTEN CONSENT FROM THE COMPANY

**GENERAL ARRANGEMENT NOTES:**

1. This drawing is to be read in conjunction with the relevant architects/ Engineer's drawings, specifications and CDM documentation.
2. Refer to Employer's Requirements for details of the Contractor's Design Portion.
3. It is the contractors responsibility to highlight to the relevant parties any discrepancy held within this drawing prior to the commencement of any works related there to.
4. All levels and setting out information to be confirmed on site before proceeding
5. The drawings and details are prepared using the information available and may be at variance with hidden historic fabric. Report any variations or differences found during the work to the architect and engineer

**GENERAL ARRANGEMENT KEY**

- Existing fabric
- Proposed fabric



Datum 97.00m

**FlowerKittle**  
architects

A - Talbot House,  
34 Staple Gardens,  
Winchester, SO23 8SR

T - +44 (0) 1252 597 147  
E - info@flowerkittle.com

Project Title  
1a Locke King Road  
KT13 0SY

Drawing Title  
Section C-C\_House 02  
Proposed

Scale  
1:50 @A3  
1:25 @A1

Drawing Number  
2305(00)22

Drawing Status

FOR INFORMATION

Revision  
A

REV	DRWN	CHECK	REV COMMENTS	ISSUE DATE
/	PK	FK	For Information	03.04.24
A	PK	FK	For Information	22.05.24

**GENERAL NOTES**

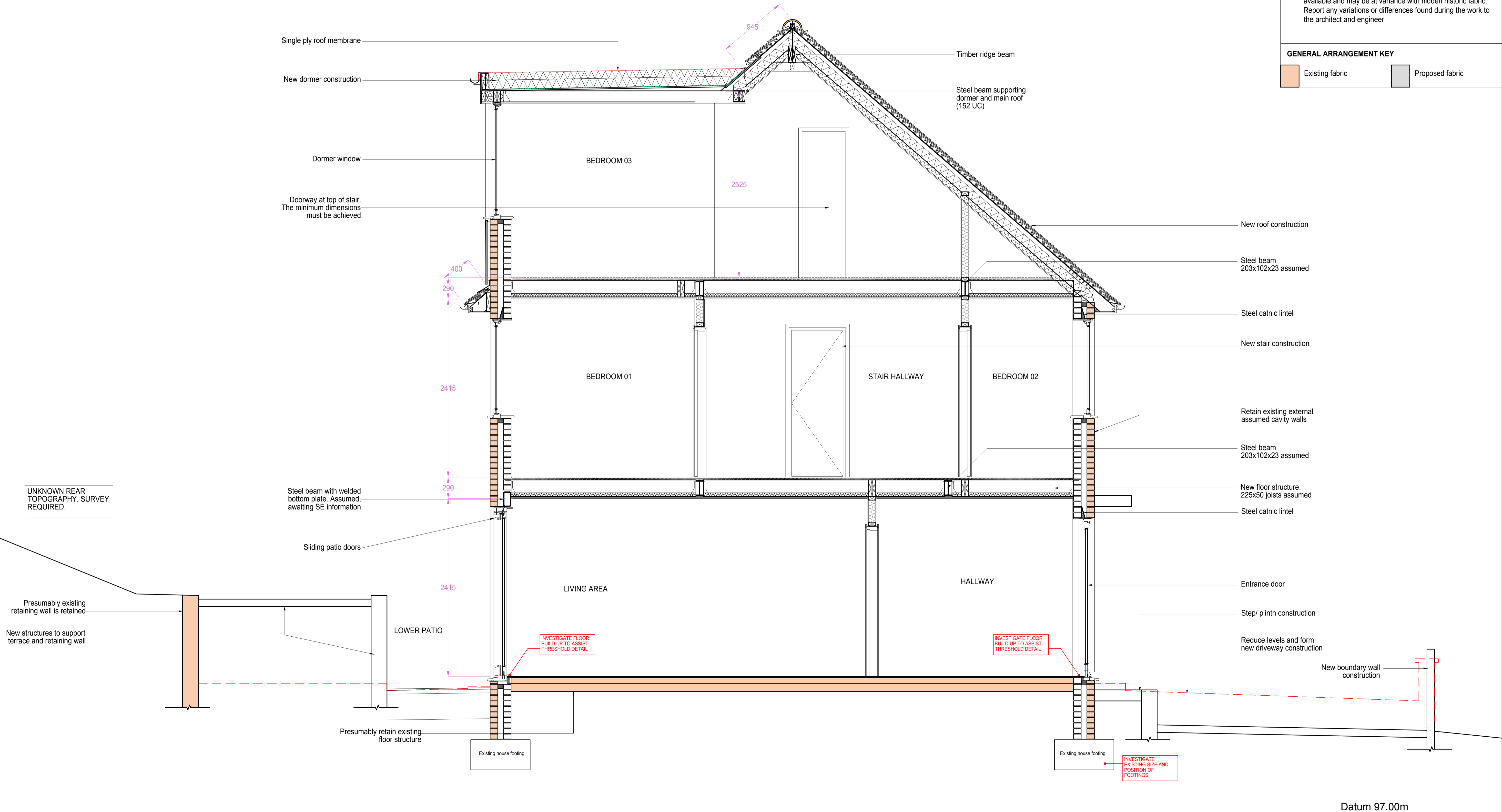
1. ALL DIMENSIONS ARE IN MILLIMETERS UNLESS STATED.
2. THIS DRAWING CONTAINS COLOURED LINES/ INFORMATION THAT MAY NOT BE CLEAR IF REPRODUCED IN BLACK AND WHITE.
3. DO NOT SCALE FROM THIS DRAWING EXCEPT FOR PLANNING PURPOSES.
4. THE AREAS ON THE DRAWING HAVE BEEN MEASURED DIRECTLY FROM A CAD DRAWING AND HAVE NO TOLERANCES ADDED OR SUBTRACTED.
5. THIS DRAWING AND INFORMATION DISPLAYED IS THE CONFIDENTIAL PROPERTY OF FLOWERKITTLE ARCHITECTS LTD AND SHALL NOT BE COPIED OR USED FOR ANY PURPOSE WITHOUT WRITTEN CONSENT FROM THE COMPANY

**GENERAL ARRANGEMENT NOTES:**

1. This drawing is to be read in conjunction with the relevant architects/ Engineer's drawings, specifications and CDM documentation.
2. Refer to Employer's Requirements for details of the Contractor's Design Portion.
3. It is the contractors responsibility to highlight to the relevant parties any discrepancy held within this drawing prior to the commencement of any works related there to.
4. All levels and setting out information to be confirmed on site before proceeding
5. The drawings and details are prepared using the information available and may be at variance with hidden historic fabric. Report any variations or differences found during the work to the architect and engineer

**GENERAL ARRANGEMENT KEY**

- Existing fabric
- Proposed fabric



Datum 97.00m

**FlowerKittle**  
architects

A - Talbot House,  
34 Staple Gardens,  
Winchester, SO23 8SR

T - +44 (0) 1252 597 147  
E - info@flowerkittle.com

Project Title  
1a Locke King Road  
KT13 0SY

Drawing Title  
Section D-D\_House 02  
Proposed

Scale  
1:50 @A3  
1:25 @A1

Drawing Number  
2305(00)23

Drawing Status

**FOR INFORMATION**

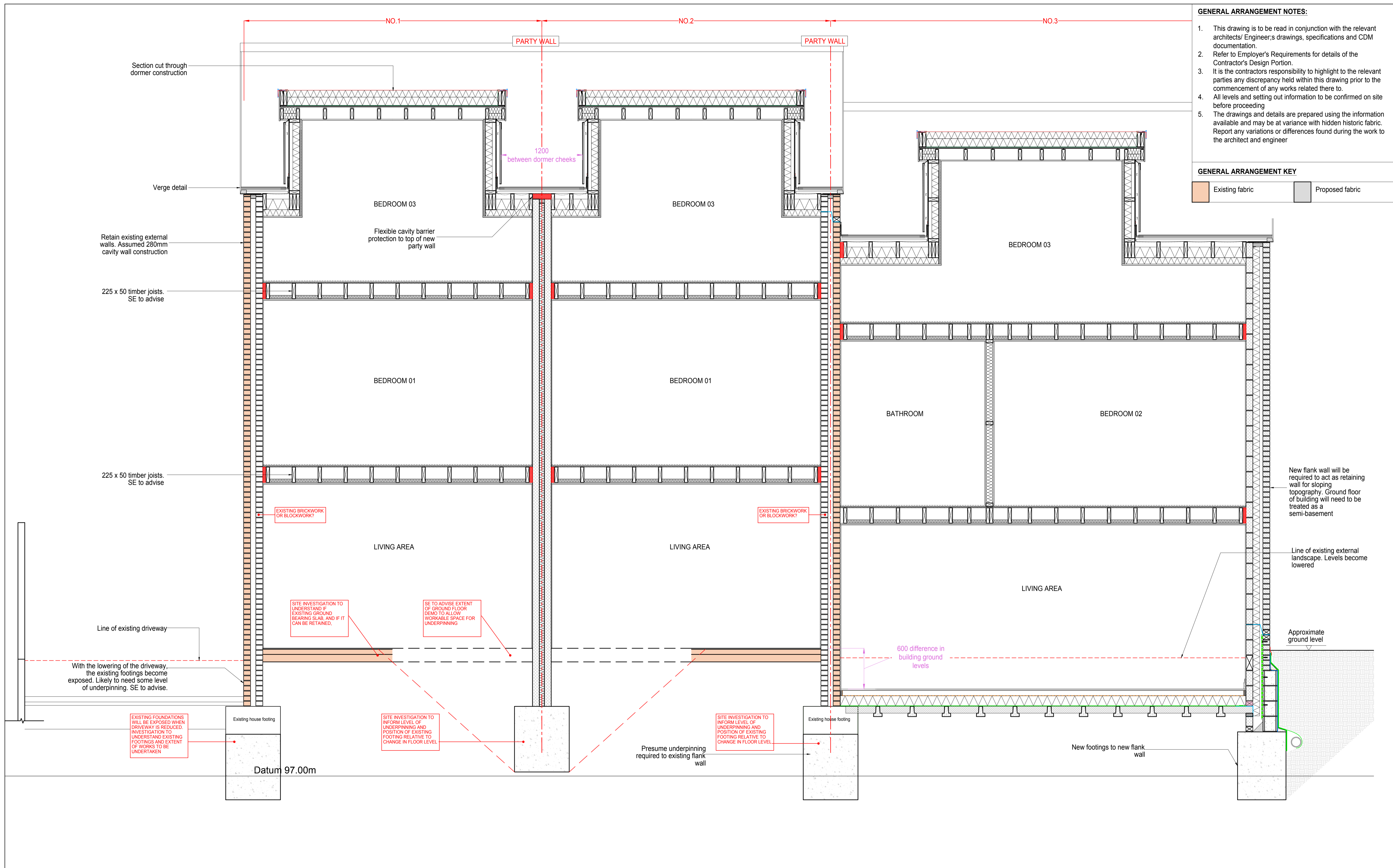
Revision  
**A**

REV	DRWN	CHECK	REV COMMENTS	ISSUE DATE
/	PK	FK	For Information	03.04.24
A	PK	FK	For Information	22.05.24

**GENERAL NOTES**

1. ALL DIMENSIONS ARE IN MILLIMETERS UNLESS STATED.
2. THIS DRAWING CONTAINS COLOURED LINES/ INFORMATION THAT MAY NOT BE CLEAR IF REPRODUCED IN BLACK AND WHITE. DO NOT SCALE FROM THIS DRAWING EXCEPT FOR PLANNING PURPOSES.
3. THE AREAS ON THE DRAWING HAVE BEEN MEASURED DIRECTLY FROM A CAD DRAWING AND HAVE NO TOLERANCES ADDED OR SUBTRACTED.
4. THIS DRAWING AND INFORMATION DISPLAYED IS THE CONFIDENTIAL PROPERTY OF FLOWERKITTLE ARCHITECTS LTD AND SHALL NOT BE COPIED OR USED FOR ANY PURPOSE WITHOUT WRITTEN CONSENT FROM THE COMPANY





- GENERAL ARRANGEMENT NOTES:**
1. This drawing is to be read in conjunction with the relevant architects/ Engineer's drawings, specifications and CDM documentation.
  2. Refer to Employer's Requirements for details of the Contractor's Design Portion.
  3. It is the contractors responsibility to highlight to the relevant parties any discrepancy held within this drawing prior to the commencement of any works related there to.
  4. All levels and setting out information to be confirmed on site before proceeding
  5. The drawings and details are prepared using the information available and may be at variance with hidden historic fabric. Report any variations or differences found during the work to the architect and engineer

**GENERAL ARRANGEMENT KEY**

Existing fabric  Proposed fabric

**FlowerKittle**  
architects

A - Talbot House,  
34 Staple Gardens,  
Winchester, SO23 8SR

T - +44 (0) 1252 597 147  
E - info@flowerkittle.com

Project Title  
1a Locke King Road  
KT13 0SY

Drawing Title  
Section 1-1  
Proposed

Scale  
1:50 @A3  
1:25 @A1

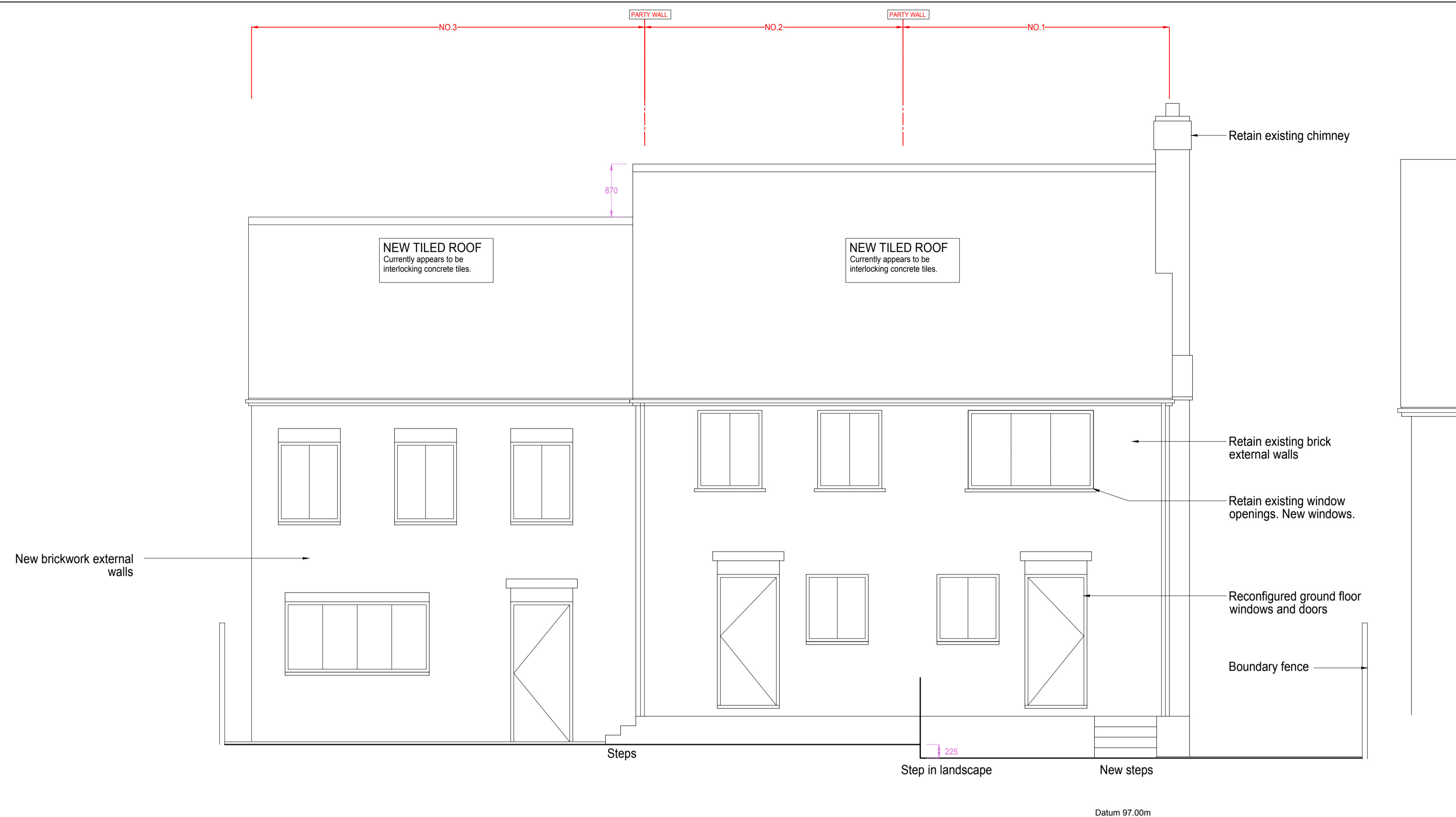
Drawing Number  
2305(00)25

Drawing Status  
**FOR INFORMATION**

Revision  
**A**

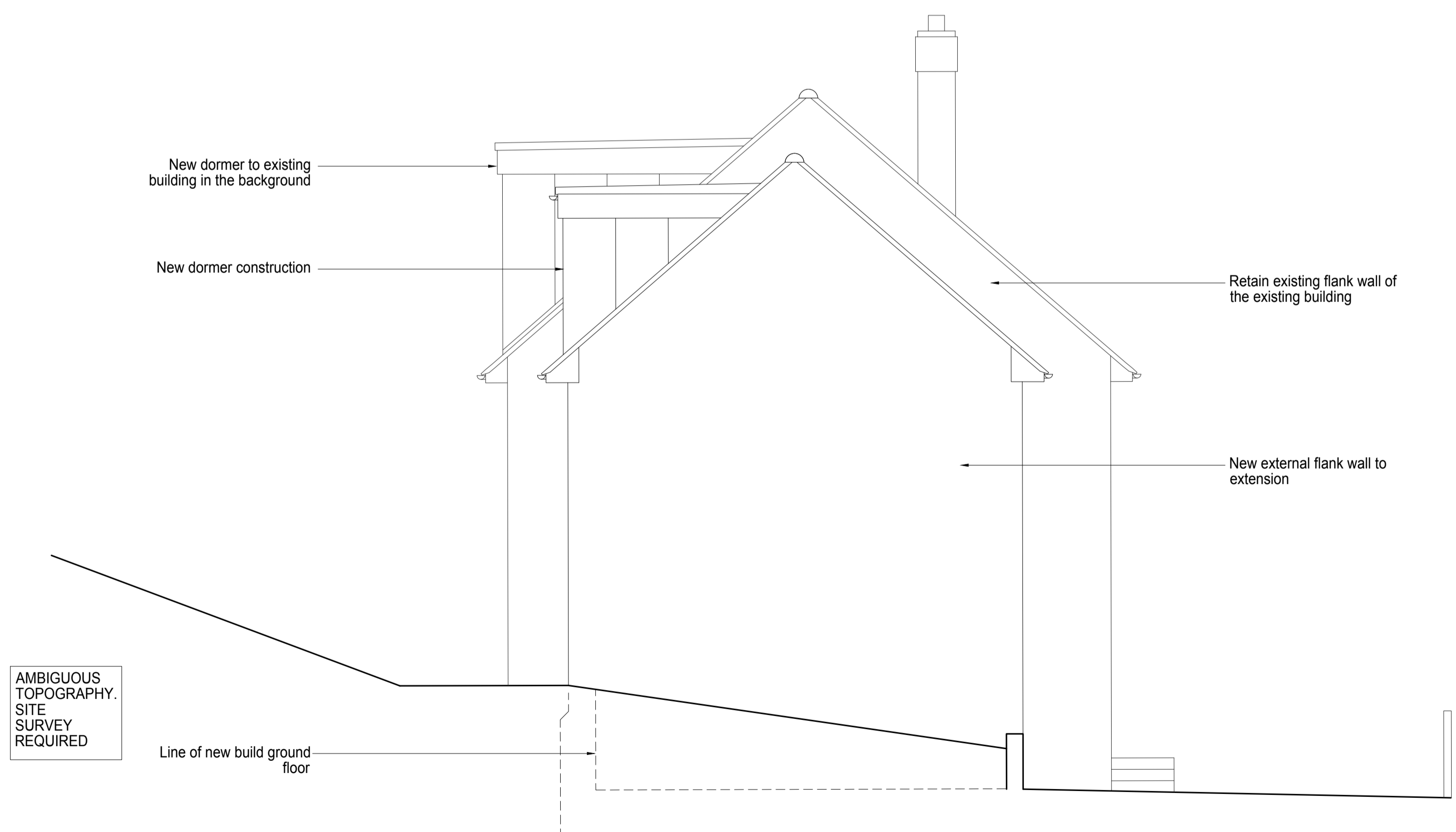
REV	DRWN	CHECK	REV COMMENTS	ISSUE DATE
/	PK	FK	For Information	03.04.24
A	PK	FK	For Information	22.05.24

- GENERAL NOTES**
1. ALL DIMENSIONS ARE IN MILLIMETERS UNLESS STATED.
  2. THIS DRAWING CONTAINS COLOURED LINES/ INFORMATION THAT MAY NOT BE CLEAR IF REPRODUCED IN BLACK AND WHITE.
  3. DO NOT SCALE FROM THIS DRAWING EXCEPT FOR PLANNING PURPOSES.
  4. THE AREAS ON THE DRAWING HAVE BEEN MEASURED DIRECTLY FROM A CAD DRAWING AND HAVE NO TOLERANCES ADDED OR SUBTRACTED.
  5. THIS DRAWING AND INFORMATION DISPLAYED IS THE CONFIDENTIAL PROPERTY OF FLOWERKITTLE ARCHITECTS LTD AND SHALL NOT BE COPIED OR USED FOR ANY PURPOSE WITHOUT WRITTEN CONSENT FROM THE COMPANY



**FRONT (NE) ELEVATION**

- GENERAL ARRANGEMENT NOTES:**
1. This drawing is to be read in conjunction with the relevant architects/ Engineer's drawings, specifications and CDM documentation.
  2. Refer to Employer's Requirements for details of the Contractor's Design Portion.
  3. It is the contractors responsibility to highlight to the relevant parties any discrepancy held within this drawing prior to the commencement of any works related there to.
  4. All levels and setting out information to be confirmed on site before proceeding
  5. The drawings and details are prepared using the information available and may be at variance with hidden historic fabric. Report any variations or differences found during the work to the architect and engineer
- GENERAL ARRANGEMENT KEY**
- Existing fabric      Proposed fabric



**SIDE (NW) ELEVATION**

**FlowerKittle**  
architects

A - Talbot House,  
34 Staple Gardens,  
Winchester, SO23 8SR

T - +44 (0) 1252 597 147  
E - info@flowerkittle.com

Project Title  
1a Locke King Road  
KT13 0SY

Drawing Title  
Front (NE) Side (NW) Elevation  
Proposed

Scale  
1:100 @A3  
1:50 @A1

Drawing Number  
2305(00)30

Drawing Status  
**FOR INFORMATION**

Revision  
**A**

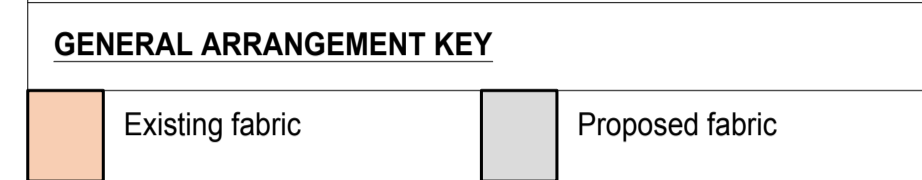
REV	DRWN	CHECK	REV COMMENTS	ISSUE DATE
/	PK	FK	For Information	03.04.24
A	PK	FK	For Information	22.05.24

**GENERAL NOTES**

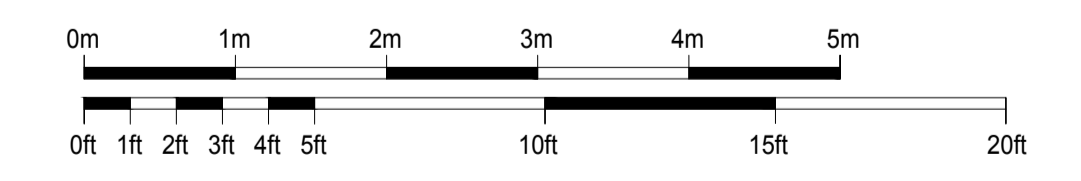
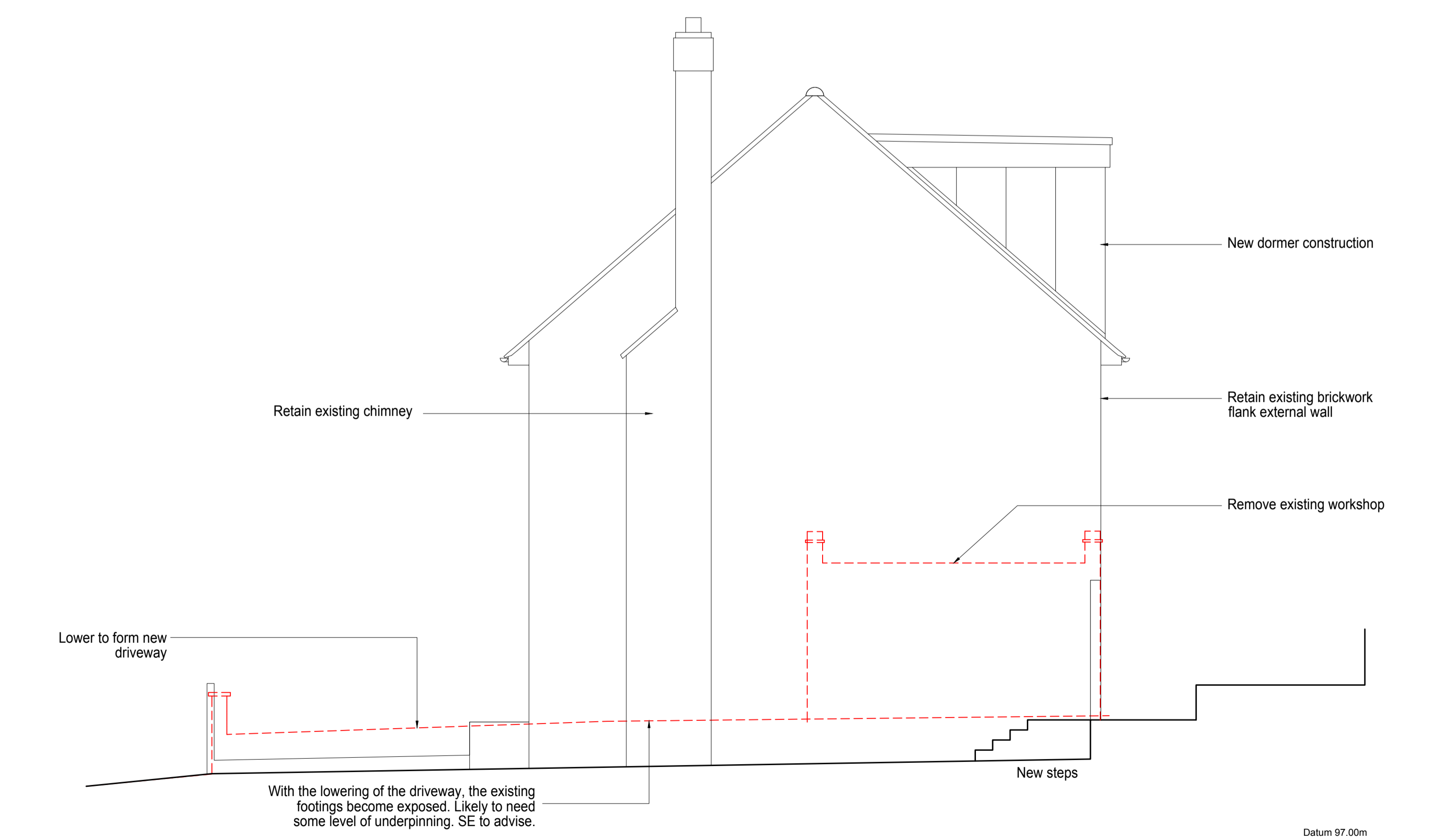
1. ALL DIMENSIONS ARE IN MILLIMETERS UNLESS STATED.
2. THIS DRAWING CONTAINS COLOURED LINES/ INFORMATION THAT MAY NOT BE CLEAR IF REPRODUCED IN BLACK AND WHITE. DO NOT SCALE FROM THIS DRAWING EXCEPT FOR PLANNING PURPOSES.
3. THE AREAS ON THE DRAWING HAVE BEEN MEASURED DIRECTLY FROM A CAD DRAWING AND HAVE NO TOLERANCES ADDED OR SUBTRACTED.
4. THIS DRAWING AND INFORMATION DISPLAYED IS THE CONFIDENTIAL PROPERTY OF FLOWERKITTLE ARCHITECTS LTD AND SHALL NOT BE COPIED OR USED FOR ANY PURPOSE WITHOUT WRITTEN CONSENT FROM THE COMPANY



- GENERAL ARRANGEMENT NOTES:**
1. This drawing is to be read in conjunction with the relevant architects/ Engineer's drawings, specifications and CDM documentation.
  2. Refer to Employer's Requirements for details of the Contractor's Design Portion.
  3. It is the contractors responsibility to highlight to the relevant parties any discrepancy held within this drawing prior to the commencement of any works related there to.
  4. All levels and setting out information to be confirmed on site before proceeding
  5. The drawings and details are prepared using the information available and may be at variance with hidden historic fabric. Report any variations or differences found during the work to the architect and engineer



AMBIGUOUS TOPOGRAPHY. SITE SURVEY REQUIRED



**FlowerKittle**  
architects

A - Talbot House,  
34 Staple Gardens,  
Winchester, SO23 8SR

Project Title  
1a Locke King Road  
KT13 0SY

Drawing Title  
Rear(SW) and Side(SE) Elevation  
Proposed

Scale  
1:100 @A3  
1:50 @A1

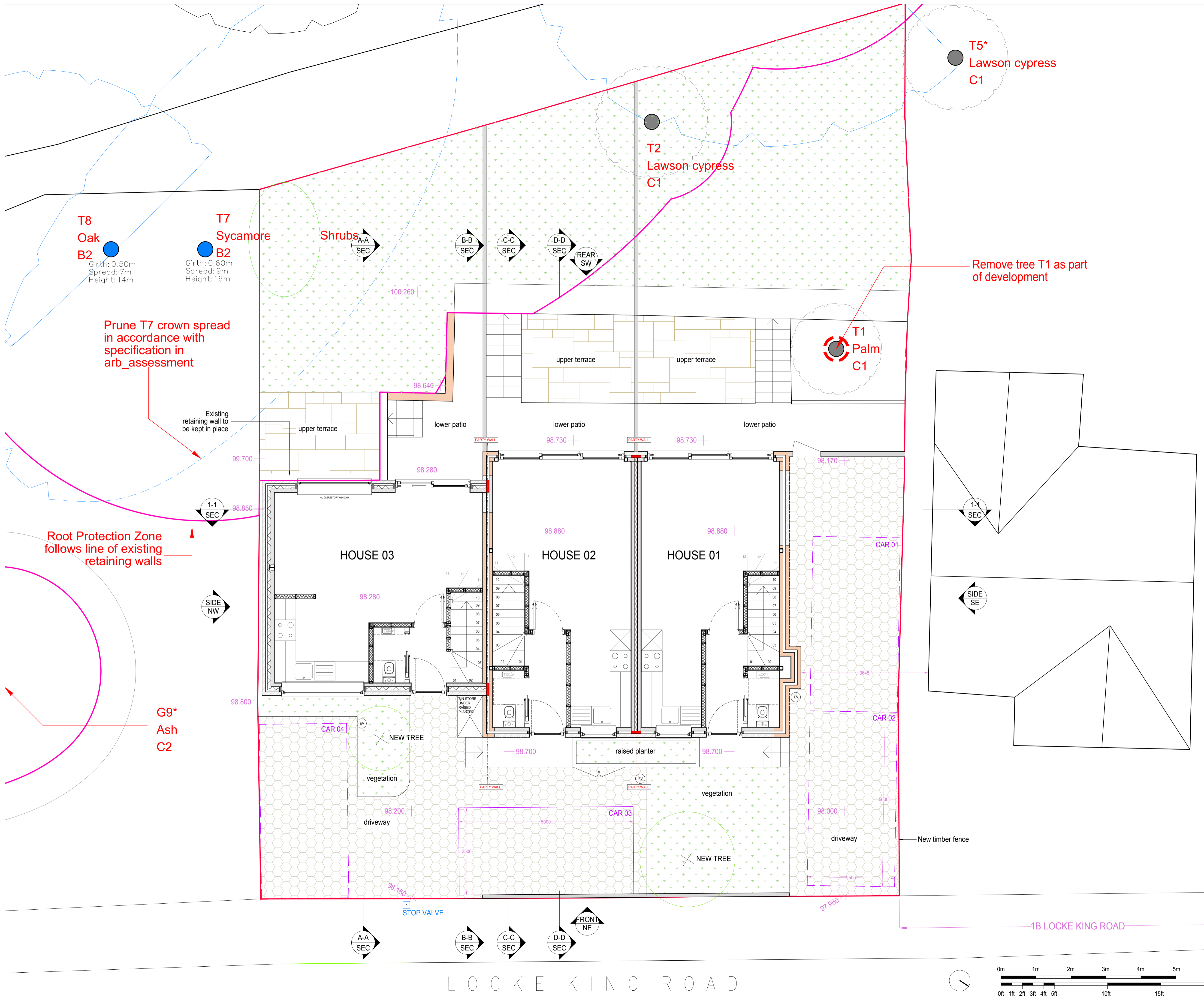
Drawing Number  
2305(00)31

Drawing Status  
FOR INFORMATION

Revision  
A

REV	DRWN	CHECK	REV COMMENTS	ISSUE DATE
/	PK	FK	For Information	03.04.24
A	PK	FK	For Information	22.05.24

- GENERAL NOTES**
1. ALL DIMENSIONS ARE IN MILLIMETERS UNLESS STATED.
  2. THIS DRAWING CONTAINS COLOURED LINES/ INFORMATION THAT MAY NOT BE CLEAR IF REPRODUCED IN BLACK AND WHITE.
  3. DO NOT SCALE FROM THIS DRAWING EXCEPT FOR PLANNING PURPOSES.
  4. THE AREAS ON THE DRAWING HAVE BEEN MEASURED DIRECTLY FROM A CAD DRAWING AND HAVE NO TOLERANCES ADDED OR SUBTRACTED.
  5. THIS DRAWING AND INFORMATION DISPLAYED IS THE CONFIDENTIAL PROPERTY OF FLOWERKITTLE ARCHITECTS LTD AND SHALL NOT BE COPIED OR USED FOR ANY PURPOSE WITHOUT WRITTEN CONSENT FROM THE COMPANY



- GENERAL NOTES**
1. ALL DIMENSIONS ARE IN MILLIMETERS UNLESS STATED.
  2. THIS DRAWING CONTAINS COLOURED LINES/ INFORMATION THAT MAY NOT BE CLEAR IF REPRODUCED IN BLACK AND WHITE.
  3. DO NOT SCALE FROM THIS DRAWING EXCEPT FOR PLANNING PURPOSES.
  4. THE AREAS ON THE DRAWING HAVE BEEN MEASURED DIRECTLY FROM A CAD DRAWING AND HAVE NO TOLERANCES ADDED OR SUBTRACTED.
  5. THIS DRAWING AND INFORMATION DISPLAYED IS THE CONFIDENTIAL PROPERTY OF FLOWERKITTLE ARCHITECTS LTD AND SHALL NOT BE COPIED OR USED FOR ANY PURPOSE WITHOUT WRITTEN CONSENT FROM THE COMPANY

- GENERAL ARRANGEMENT NOTES:**
1. This drawing is to be read in conjunction with the relevant architects/ Engineer's drawings, specifications and CDM documentation.
  2. Refer to Employer's Requirements for details of the Contractor's Design Portion.
  3. It is the contractors responsibility to highlight to the relevant parties any discrepancy held within this drawing prior to the commencement of any works related there to.
  4. All levels and setting out information to be confirmed on site before proceeding
  5. The drawings and details are prepared using the information available and may be at variance with hidden historic fabric. Report any variations or differences found during the work to the architect and engineer

**GENERAL ARRANGEMENT KEY**

	Existing fabric		Proposed fabric
	Site boundary		
	Root Protection Area (RPA) Refer to Arboriculturist's information - New services MUST be routed to avoid all RPAs of retained trees on site and within nearby sites. - Inspection chambers must also be sited outside the RPAs of any nearby trees		

A	PK	FK	For Information	22.05.24
/	PK	FK	For Information	03.04.24
REV	DRWN	CHECK	REV COMMENTS	ISSUE DATE

**FlowerKittle architects**  
 T - +44 (0)1252 597 147 E - info@flowerkittle.com  
 A - Talbot House, 34 Staple Gardens, Winchester, SO23 8SR

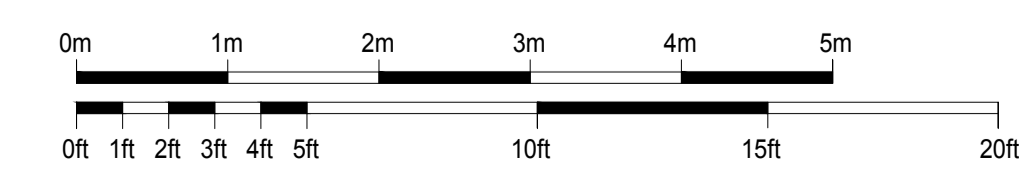
Project Title  
**1a Locke King Road, KT13 0SY**

Drawing Title  
**Site Plan Proposed**

Scale  
 1:100 @A3  
 1:50 @A1

Drawing Number  
**2305(00)05** Revision  
**A**

Drawing Status  
**FOR INFORMATION**



LOCKE KING ROAD