



**FOUNTAIN ROAD, TOOTING
LONDON, SW17**

£2,800 PCM



CHRISTOPHER ST. JAMES
Established 1976

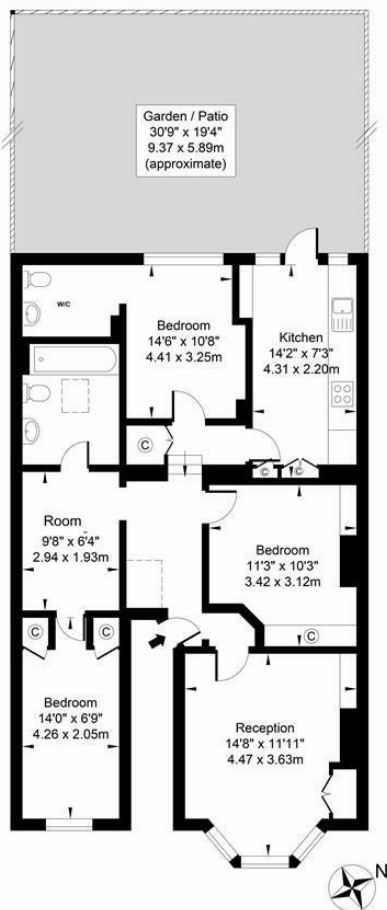
Residential / Commercial / Land & Development

020 8296 1270

www.csj.eu.com

lettings@csj.eu.com

Fountain Road, Tooting SW17 0HN
 Approx. Gross Internal Area 842.92 Sq Ft - 78.31 Sq M



Ground Floor

For Illustration Purposes Only - Not To Scale - Floor Plan by InterDesign Photography
 www.interdesignphotography.com

This floor plan should be used as general outline for guidance only.
 All measurements are approximate and for illustration purposes only as defined by theRICS Code of Measuring Practice ©2011

- 3 Bedrooms
- 2 Receptions
- 1 Bathroom
- 2 Toilet
- Gas Central Heating
- Available from 25th October
- Unfurnished
- Newly refurbished
- Wandsworth Council Tax Band C

Score	Energy rating	Current	Potential
92+	A		
81-91	B		
69-80	C		80 C
55-68	D	68 D	
39-54	E		
21-38	F		
1-20	G		

VIEWINGS

Viewings available daily
 Please contact our residential team on 020 8296 1270 alternatively by email
lettings@csj.eu.com

THE SMALL PRINT

Christopher St James, our clients and any joint agents give notice that:

- 1) They have no authority to make or give any representations or warranties in relation to the property. These particulars do not form part of any offer or contract and must not be relied upon as statements or representations of fact.
- 2) Any areas, measurements or distances are approximate. The text, photographs and plans are for guidance only and not necessarily comprehensive. It should not be assumed that the property has all necessary planning, building, regulation or other consents and Christopher St James have not tested any services, equipment or facilities. Purchasers must satisfy themselves by inspection or otherwise.

Christopher St James
 61 High Street Colliers
 London
 SW19 2JF



CHRISTOPHER ST. JAMES
 Established 1976

Residential / Commercial / Land & Development

020 8296 1270
www.csj.eu.com
lettings@csj.eu.com