

**14 GLENEAGLE MEWS, STREATHAM,
LONDON, SW16 6AE**

Offers In Excess Of £150,000 Freehold



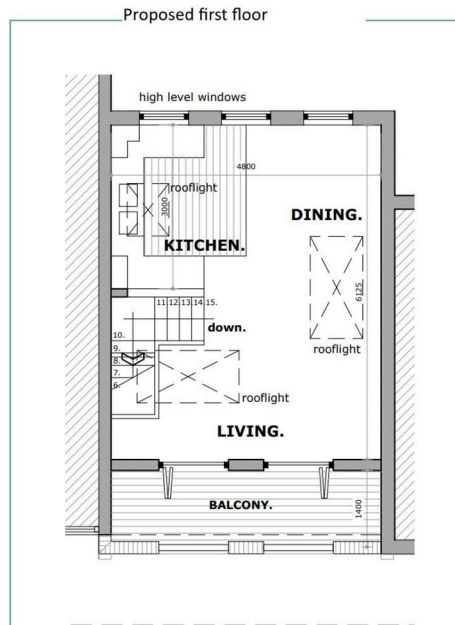
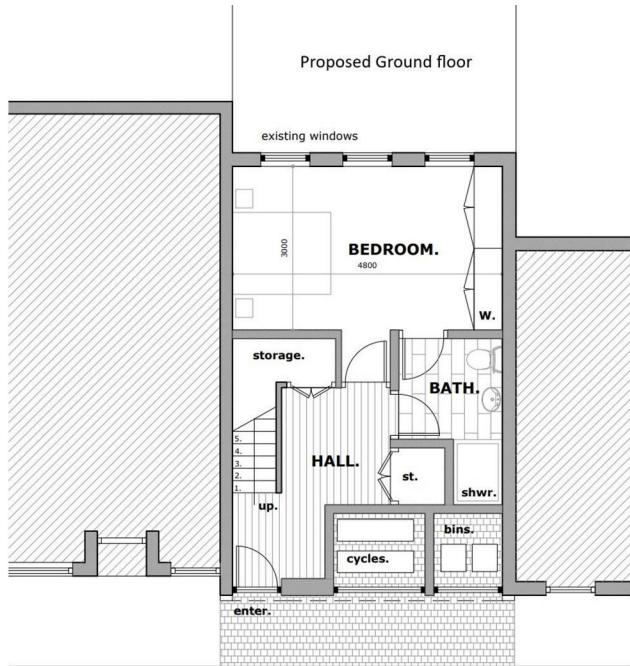
CHRISTOPHER ST. JAMES
Established 1976

Residential / Commercial / Land & Development

020 8296 1273

www.csj.eu.com

info@csj.eu.com



Christopher St James
 61 High Street
 Colliers Wood
 London
 SW19 2JF



CHRISTOPHER ST. JAMES
 Established 1976

Residential / Commercial / Land & Development

020 8296 1273
 www.csj.eu.com
 developments@csj.eu.com



Description

Consented development opportunity for sale
Existing single storey former stables with planning granted to create a brand new 68.2 sqm residential dwelling

Location

Situated in the vibrant and well-connected area of Streatham, this property is ideally located for access to an array of local amenities. Streatham Station just minutes walk away, providing fast transport links into Central London. Additionally, Streatham Common and Tooting Bec are nearby.

Planning

23/02136/FUL

Demolition of existing stable building and erection of a 2-storey one bedroom dwelling

This is a car free development, owners and or occupiers are not able to apply for parking permits

Services

Not Checked

Viewing

Contact sole agents

Christopher St James 020 8296 1273

Proposed elevation



THE SMALL PRINT

Christopher St James, our clients and any joint agents give notice that:

- 1) They have no authority to make or give any representations or warranties in relation to the property. These particulars do not form part of any offer or contract and must not be relied upon as statements or representations of fact.
- 2) Any areas, measurements or distances are approximate. The text, photographs and plans are for guidance only and not necessarily comprehensive. It should not be assumed that the property has all necessary planning, building, regulation or other consents and Christopher St James have not tested any services, equipment or facilities. Purchasers must satisfy themselves by inspection or otherwise.

Christopher St James
61 High Street
Colliers Wood
London
SW19 2JF



CHRISTOPHER ST. JAMES
Established 1976

Residential / Commercial / Land & Development

020 8296 1273
www.csj.eu.com
developments@csj.eu.com