



95A FULHAM PALACE ROAD,
HAMMERSMITH, LONDON, W6 8JA

£13,000 Per Annum



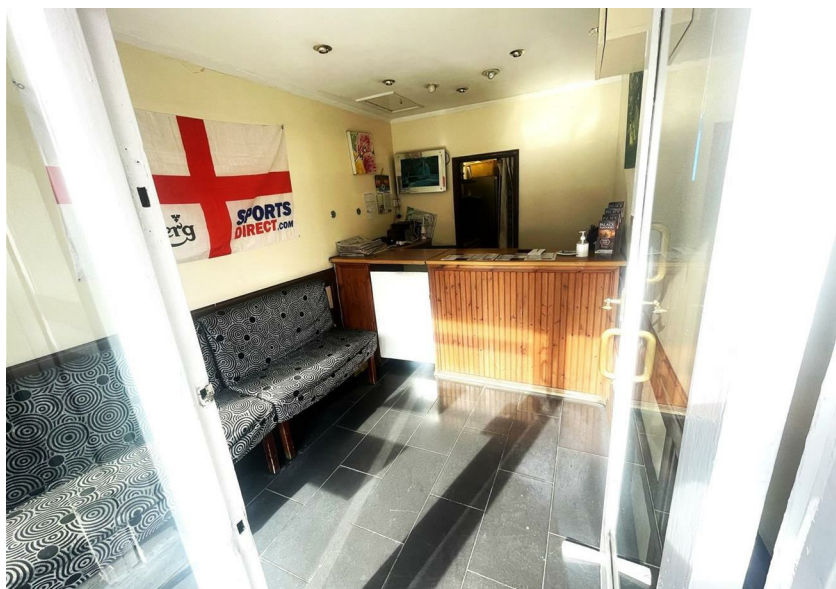
CHRISTOPHER ST. JAMES
Established 1976

Residential / Commercial / Land & Development

020 8296 1273

www.csj.eu.com

info@csj.eu.com



Description

Established takeaway unit. Available now on a lease assignment with 17years remaining.

Location

The property is situated in a prime position on Fulham Palace Road, Hammersmith, W6.

Nearest Station :

Hammersmith Underground Station : 0.4miles

Terms

Lease Assignment : 17 years remaining on current lease

Rent: £13,000p/a

Premium: £65,000

Rates

Interested parties are advised to make their own enquiries with the local rating authority.

Viewings

Strictly by appointment only

Contact Sole Agents - Christopher St James on 020 8296 1273

THE SMALL PRINT

Christopher St James, our clients and any joint agents give notice that:

- 1) They have no authority to make or give any representations or warranties in relation to the property. These particulars do not form part of any offer or contract and must not be relied upon as statements or representations of fact.
- 2) Any areas, measurements or distances are approximate. The text, photographs and plans are for guidance only and not necessarily comprehensive. It should not be assumed that the property has all necessary planning, building, regulation or other consents and Christopher St James have not tested any services, equipment or facilities. Purchasers must satisfy themselves by inspection or otherwise.

Christopher St James
61 High Street
Colliers Wood
London
SW19 2JF



CHRISTOPHER ST. JAMES
Established 1976

Residential / Commercial / Land & Development

020 8296 1273
www.csj.eu.com
info@csj.eu.com