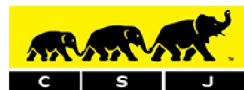




251 NORTHBOROUGH ROAD, STREATHAM,  
LONDON, SW16 4TR

*£450,000 Freehold*



CHRISTOPHER ST. JAMES  
Established 1976

Residential / Commercial / Land & Development

020 8296 1273

[www.csj.eu.com](http://www.csj.eu.com)

[info@csj.eu.com](mailto:info@csj.eu.com)

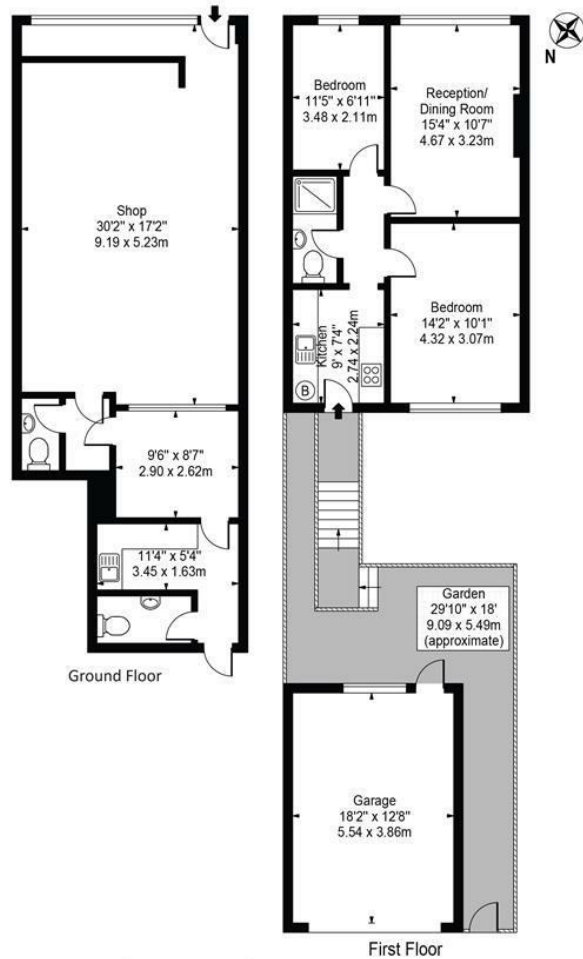
Northborough Road, SW16 4TR

Approx. Gross Internal Area 540 Sq Ft - 50.17 Sq M

(Excluding Garage & Shop)

Approx. Gross Internal Area Of Garage 230 Sq Ft - 21.38 Sq M

Approx. Gross Internal Area Of Shop 760 Sq Ft - 70.61 Sq M



For Illustration Purposes Only - Not To Scale - Floor Plan by interDesign Photography  
[www.interdesignphotography.com](http://www.interdesignphotography.com)

This floor plan should be used as general outline for guidance only.  
All measurements are approximate and for illustration purposes only as defined by the RICS Code of Measuring Practice ©2016.

## Description

Mid terraced mixed use property for sale

Ground floor commercial unit previously let to Coral and now vacant with a two bedroom flat above accessed from the rear.

Outside to front is an area of hard standing with a yard area and garage at the rear

## Location

The property is situated within a mixed use parade on Northborough Road.

Nearest Stations :

Norbury Station 0.9miles

Mitcham Eastfields Station 1.2 miles

## Tenancies

Ground floor commercial: Vacant - Estimated rent £15,000 pa

First floor flat: Vacant

## VIEWINGS

Viewings available daily

Please contact our residential team on 020 8296 1273 alternatively by email

[info@csj.eu.com](mailto:info@csj.eu.com)



## THE SMALL PRINT

Christopher St James, our clients and any joint agents give notice that:

- 1) They have no authority to make or give any representations or warranties in relation to the property. These particulars do not form part of any offer or contract and must not be relied upon as statements or representations of fact.
- 2) Any areas, measurements or distances are approximate. The text, photographs and plans are for guidance only and not necessarily comprehensive. It should not be assumed that the property has all necessary planning, building, regulation or other consents and Christopher St James have not tested any services, equipment or facilities. Purchasers must satisfy themselves by inspection or otherwise.

**Christopher St James**

61 High Street

Colliers Wood

London

SW19 2JF



**CHRISTOPHER ST. JAMES**  
Established 1976

Residential / Commercial / Land & Development

**020 8296 1273**

**[www.csj.eu.com](http://www.csj.eu.com)**

**[info@csj.eu.com](mailto:info@csj.eu.com)**