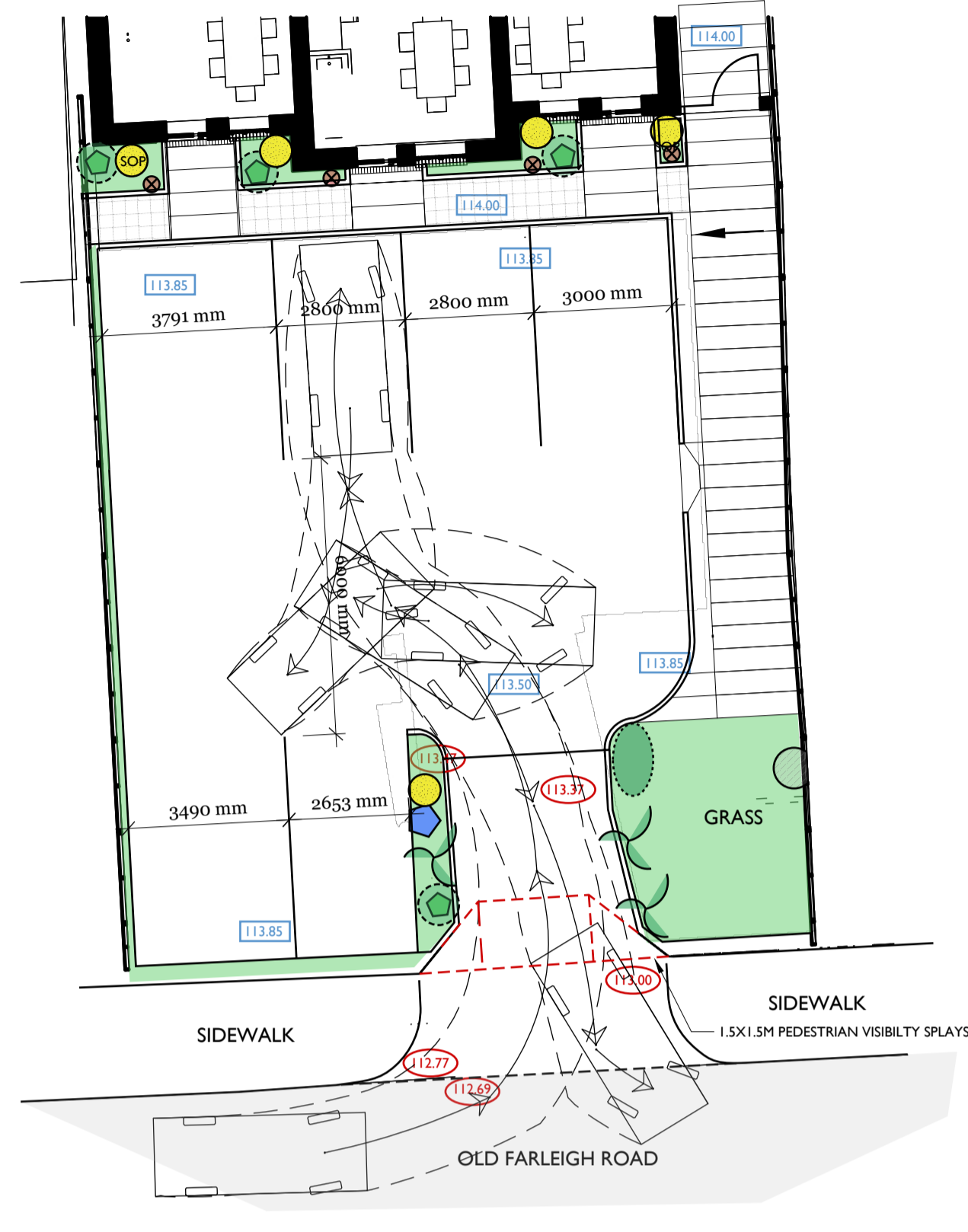
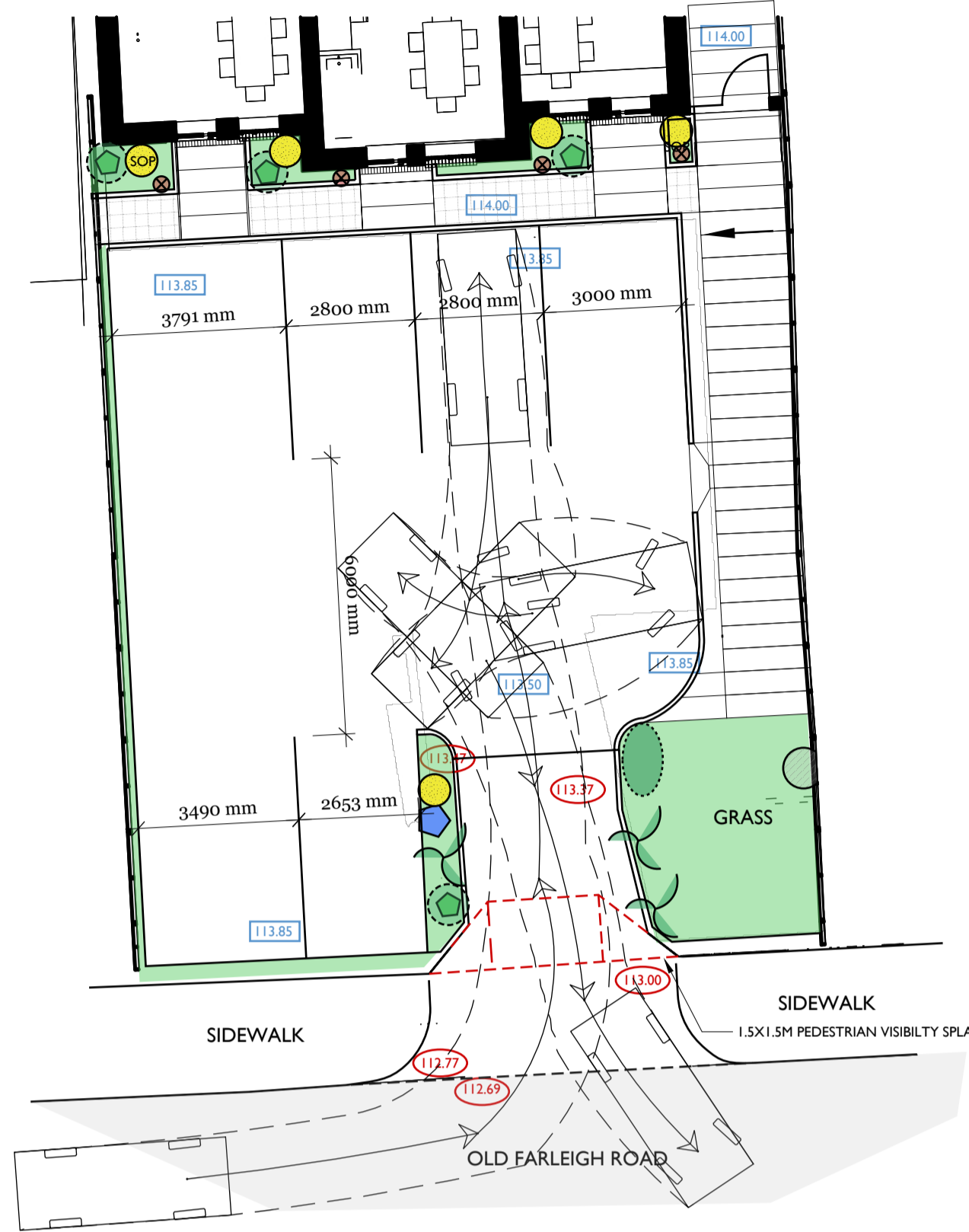


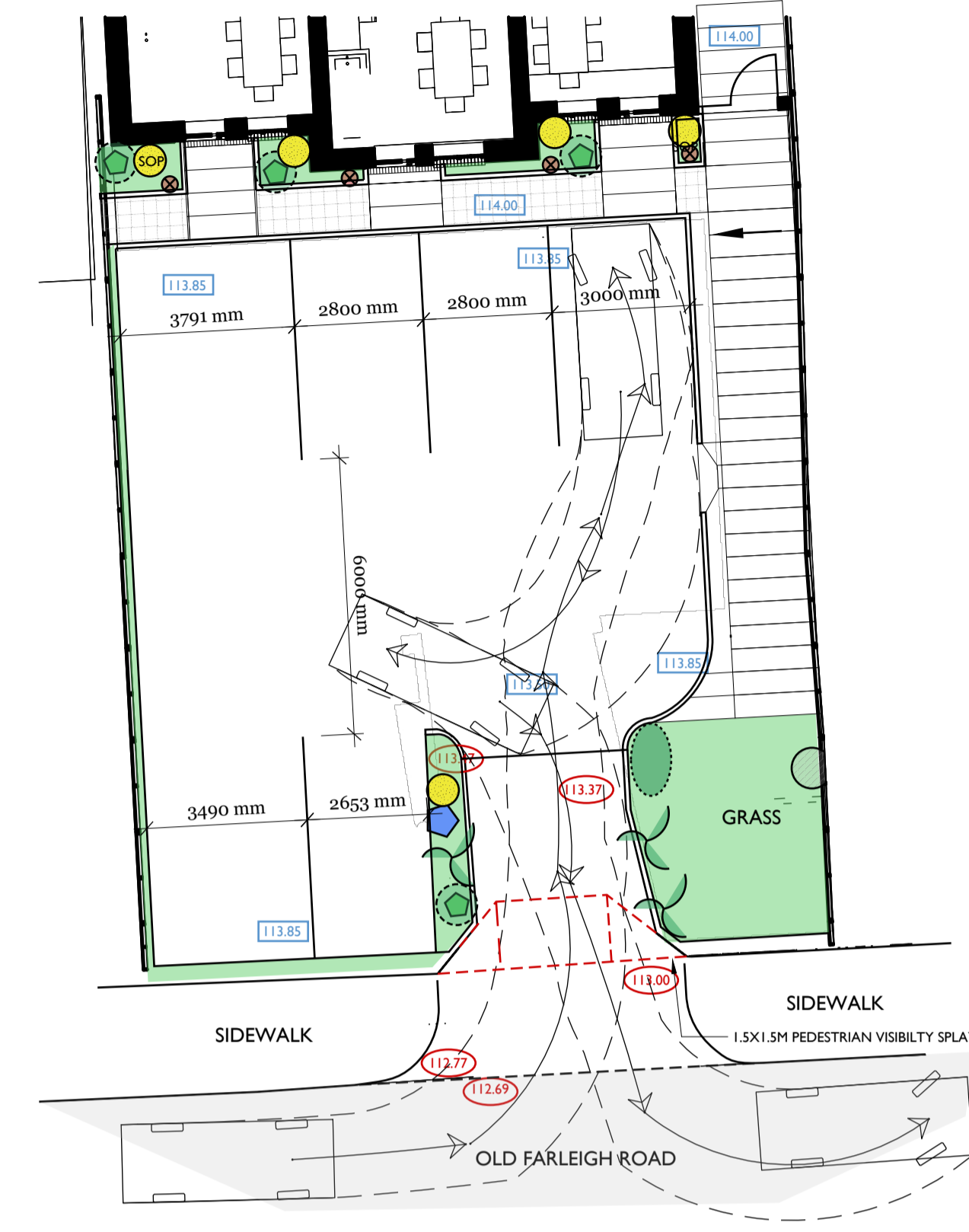
PARKING BAY 1
1:125 @ A1/ 1:250@A3



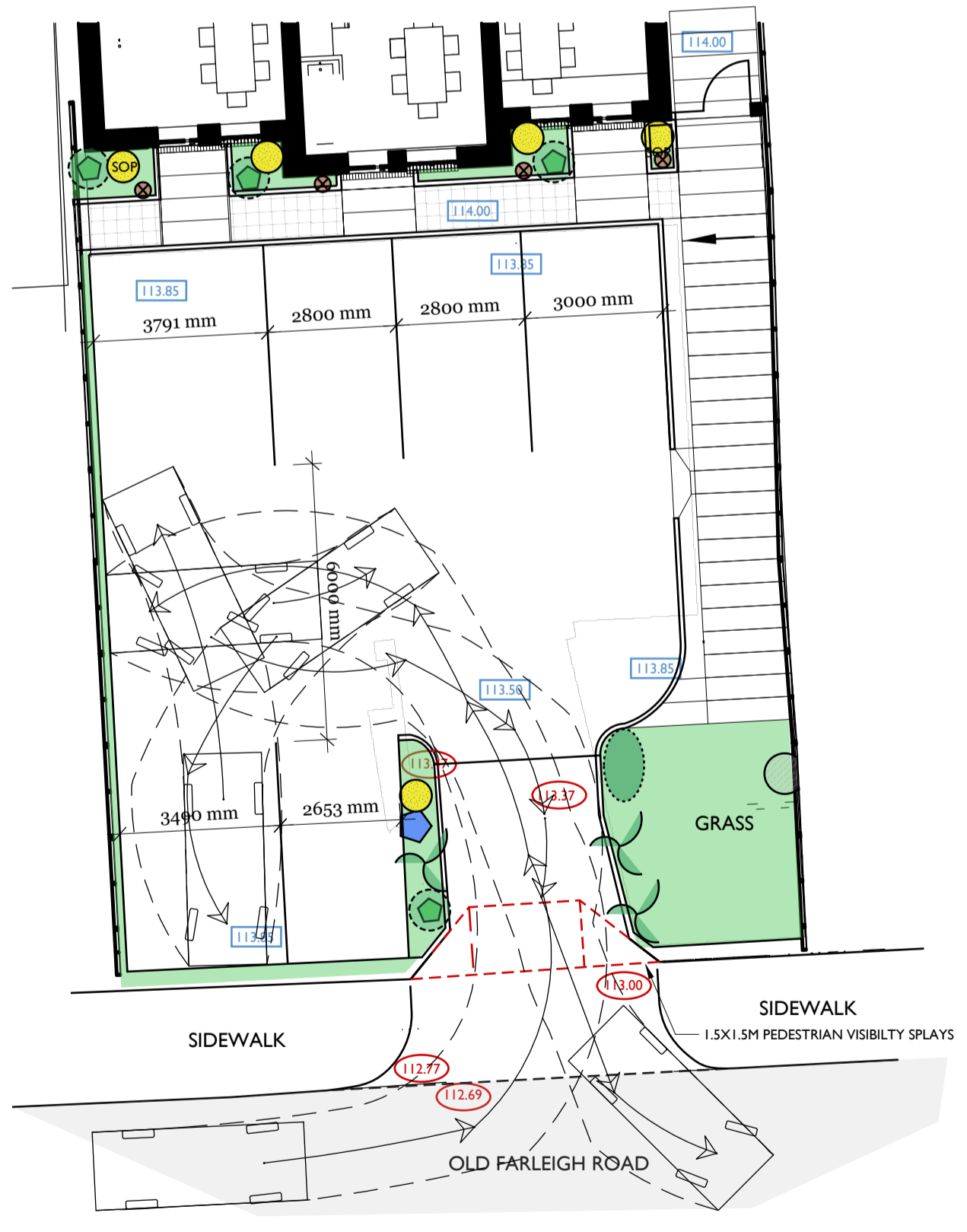
PARKING BAY 2
1:125 @ A1/ 1:250@A3



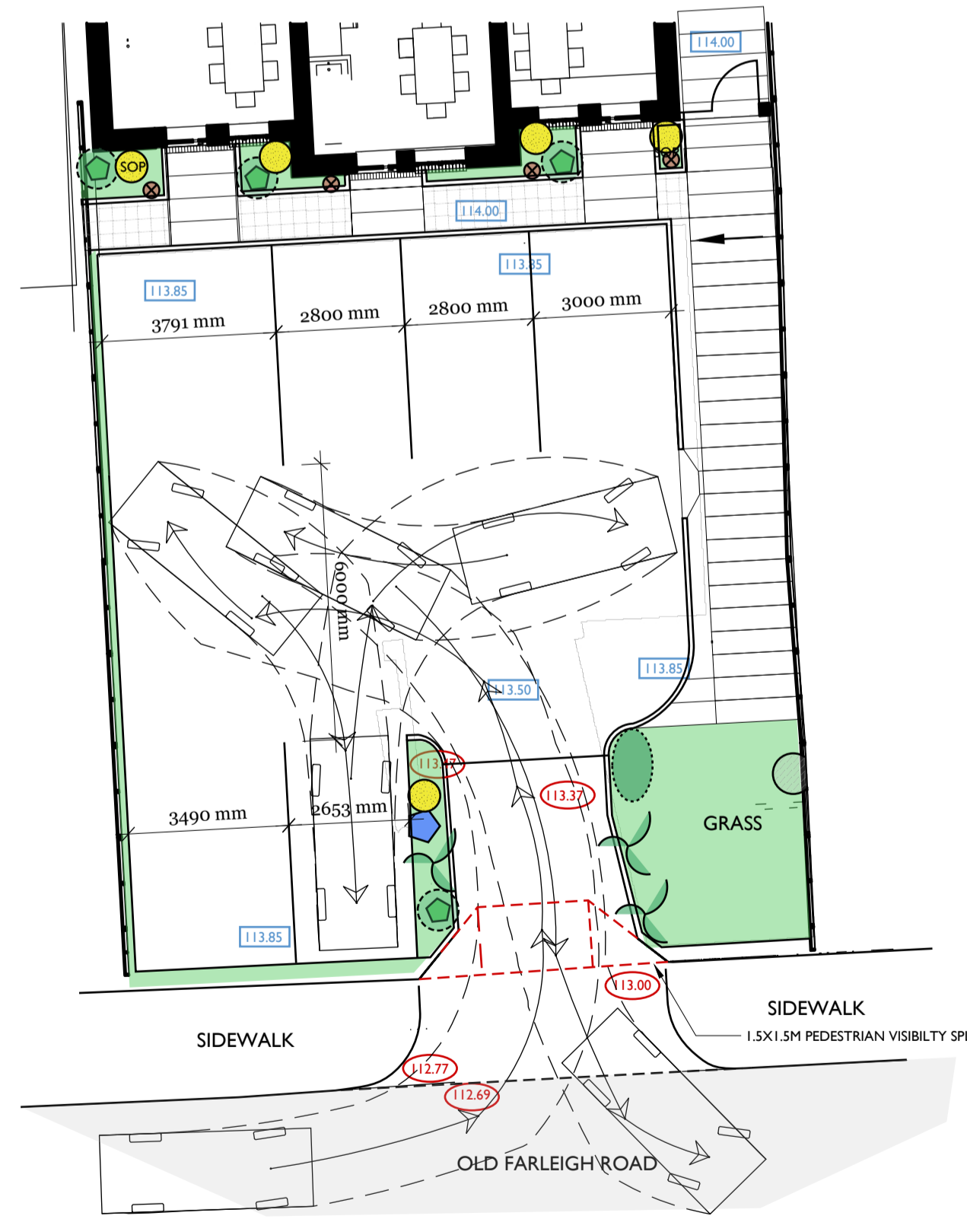
PARKING BAY 3
1:125 @ A1/ 1:250@A3



PARKING BAY 4
1:125 @ A1/ 1:250@A3

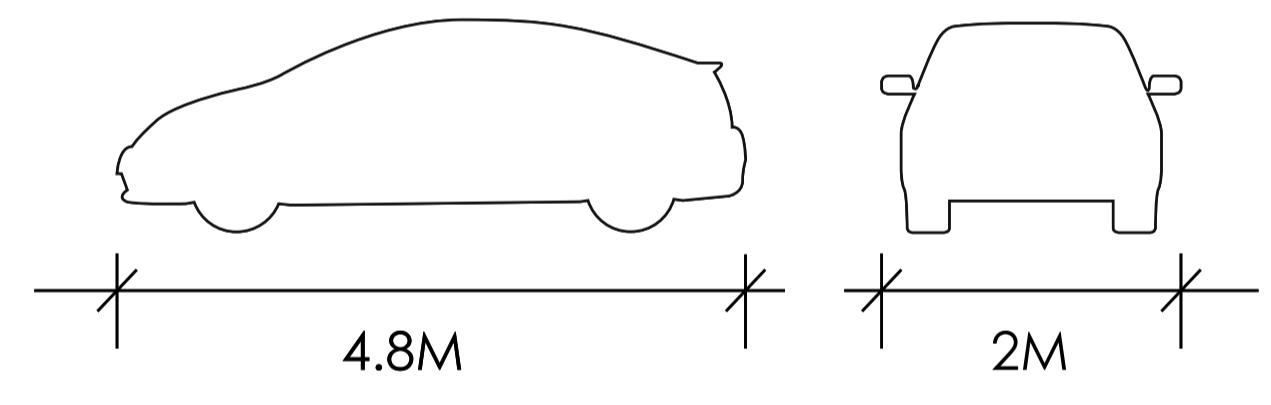


PARKING BAY 5
1:125 @ A1/ 1:250@A3

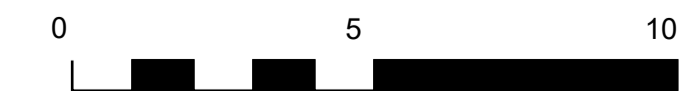


PARKING BAY 6
1:125 @ A1/ 1:250@A3

STANDARD VEHICLE DESIGN (SVD)



- OVERALL LENGTH 4.8M
- OVERALL WIDTH 2.0M
- OVERALL BODY HEIGHT 1.95M
- MIN BODY GROUND CLEARANCE 0.1M
- TRACK WIDTH 2.0M
- LOCK TO LOCK TIME 4SEC
- WALL TO WALL TURN RADIUS 6.0M



REVISIONS	
NO.	REMARKS
1	SECTION 73A SUBMISSION
2	PLANNING AMENDMENTS - PARKING DIMS ADDED - SPLAY LINES ADDED
3	PLANNING AMENDMENTS - PARKING BAY SIZES INCREASED - SPLAY LINES ADDED
	ACCESS ROUTE WIDENED

ARCHITECT: **JAMES JACKSON**
 STATUS: **PLANNING**
 PROJECT: **119 OLD FARLEIGH ROAD, CROYDON**

TRANSPORT STRATEGY VEHICLE TRACKING