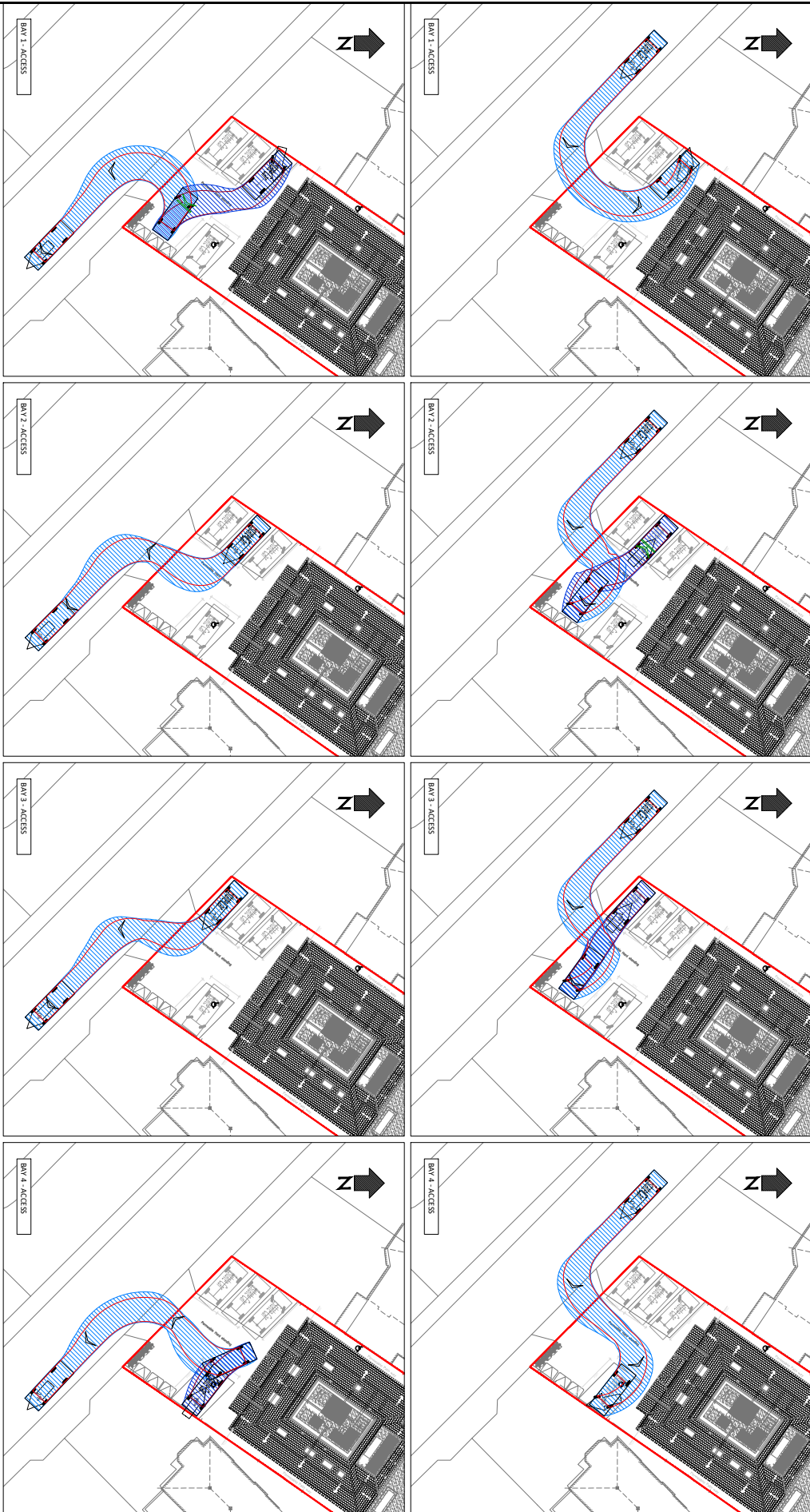


Estate Car	48.45m
Overall Length	1.750m
Overall Width	1.474m
Overall Body Height	0.169m
Min Body Ground Clearance	1.655m
Max Track Width	4.001m
Lock to lock time	4.950m
Kerb to Kerb Turning Radius	



Rev	Date	Description	AS	DD	DD
-	08/03/21	ORIGINAL ISSUE			

 **wilbar associates limited**
HIGHWAY & TRAFFIC CONSULTANTS
Woodbrooke Farm, Teal Lane, Puddingh,
West Sussex RH20 1BX
Tf: 01793 874653 E: mail@wilbarassociates.co.uk

Project

Drawing Title
SWEPT PATH ANALYSIS USING A
ESTATE CAR

Drawing Status
FOR INFORMATION

Drawing No. 2499-002