

TYPICAL SEDUM ROOF DETAILS

Maintenance Schedule

It is recommended that any sedum, wildflower or biodiverse roof is maintained twice a year (Spring and Autumn). The maintenance actions, laid out by Sky Garden's trained and certified engineers, are listed below. Prior to maintenance, the following is recommended:

- The roof is irrigated at a rate of 10-15L per sqm for the first 12 weeks following installation. This rate should be repeated in dry spells. A permanent irrigation system should be considered for wildflower roofs.
- To keep foot traffic on the roof to an absolute minimum following installation. Sedum and wildflower roofs are not designed to handle heavy foot traffic, as this can lead to damage to the vegetation. It is therefore recommended that any other roofing works are completed prior to green roof installation.

The standard maintenance actions are as follows:

- Full roof inspection to assess:
 - a) Wildflower/sedum coverage
 - b) Diversity of Wildflower/sedum species present
 - c) Weed spectrum (e.g. presence of moss/grass)
 - d) Performance of drainage
 - e) Performance of retention (if present)
 - f) Performance of irrigation system (if present)/soil dryness and assess commissioning/decommissioning requirements
 - g) Any areas in need of replacement or supplementation.
- Hand/spot weeding using specifically developed and naturally derived chemical treatments.
- Removal of spent flower heads.
- Clearing of drainage channels and exposed outlets.
- For wildflower roofs, spent vegetation trimmed back in Autumn.
- For sedum roofs, a slow-release organic fertiliser applied once a year in Spring.

Roof Composition:
Base - Geotextile fabric / coir blanket
Growing Medium - 25mm Sedum Mix
Vegetation - Mature Sedum Plants grown from rhizome & seed.

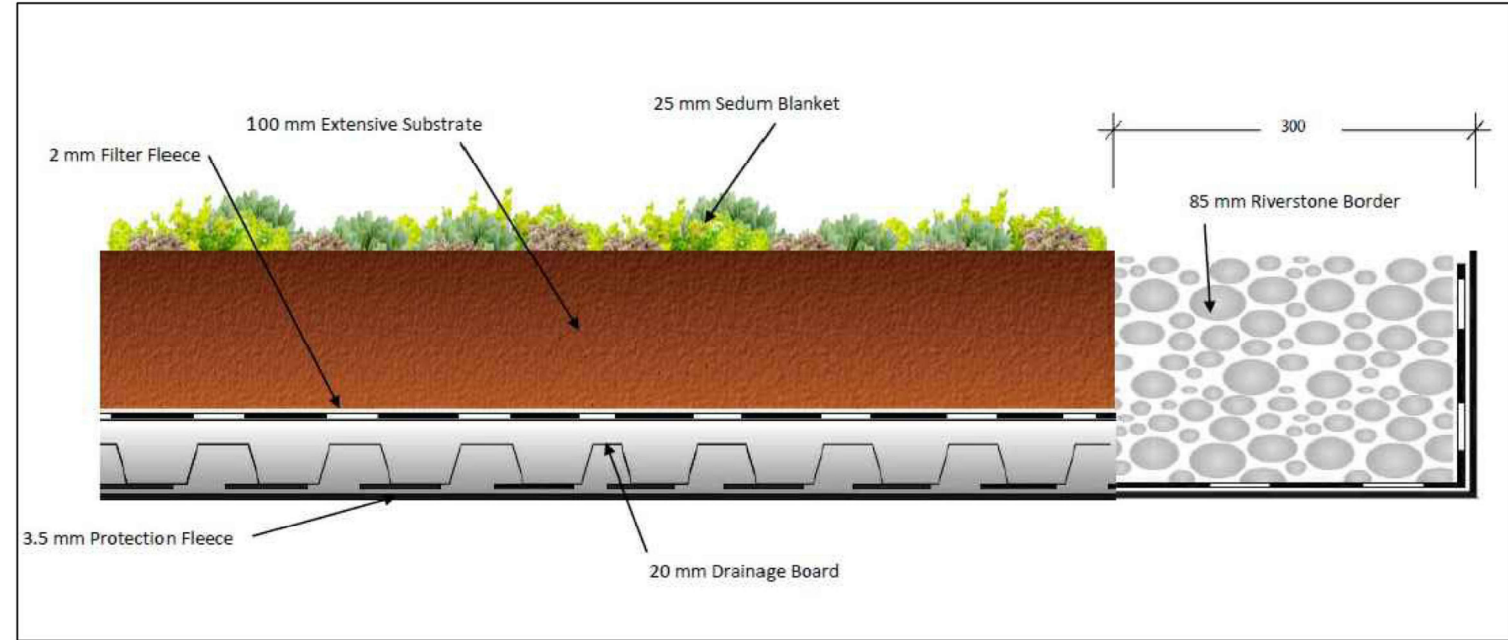
Plant height:
20-50mm, depending on growing stage of sedum.

Species of sedum sown in a mix are:
Sedum acre, Sedum album,
Sedum ellacombianum, sedum floriferum,
Sedum hybridum, Sedum middendorffianum,
Sedum Montanum, Sedum Pulchellum,
Sedum Reflexum, Sedum selskianum,
Sedum sexangulare, Sedum spurium

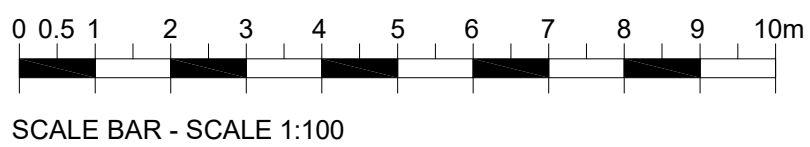
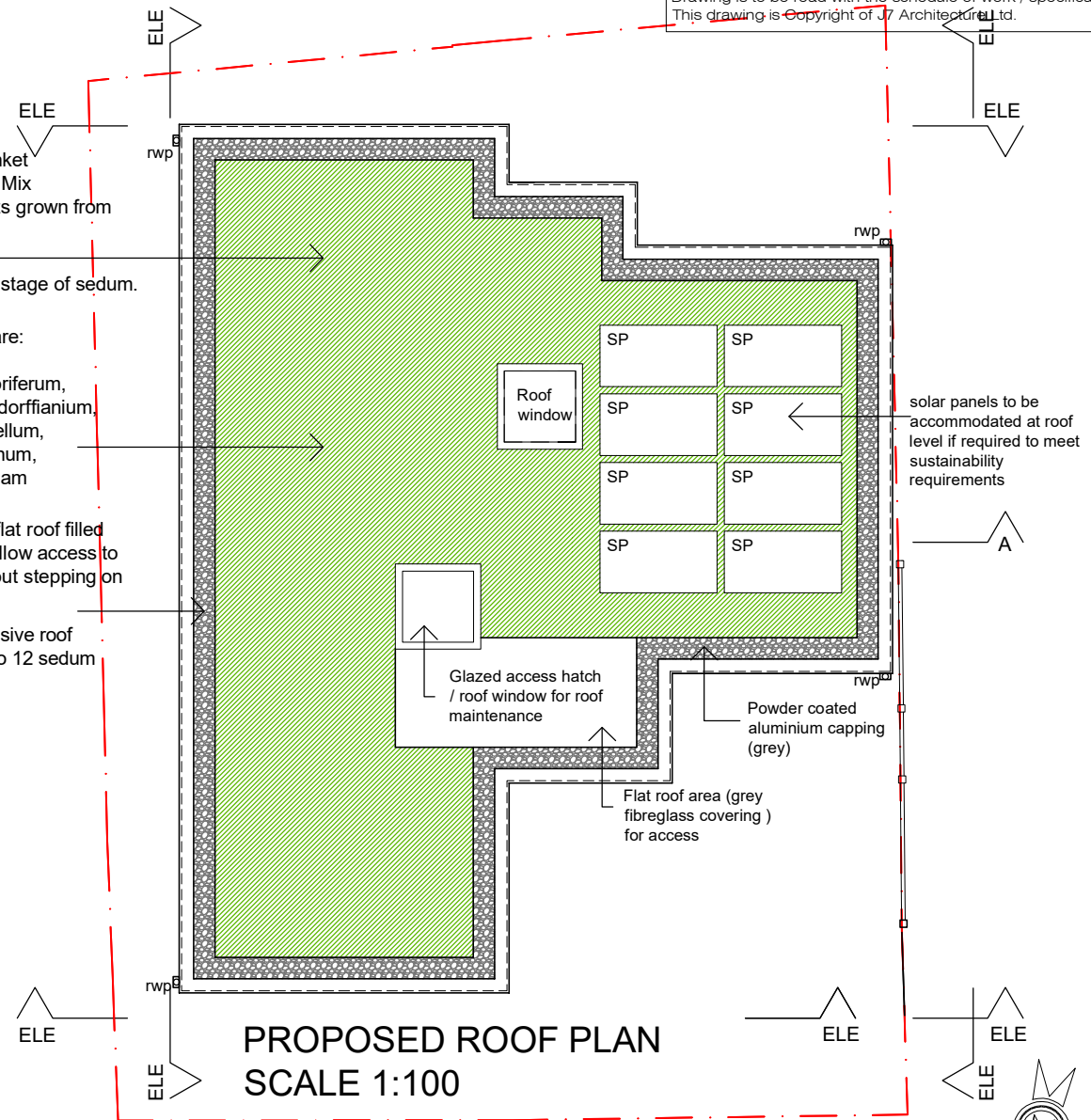
300mm wide perimeter border to flat roof filled with pebbles / stones. Border to allow access to sedum roof for maintenance without stepping on plants.

High quality sedum blanket, extensive roof system using selected mix of up to 12 sedum species.

All dimensions are to be checked on site.
All dimensions are in millimetres.
All Discrepancies are to be reported to the architect immediately.
Drawings marked "planning" or "design" are not to be used for construction purposes.
Drawing is to be read with the schedule of work / specification if applicable.
This drawing is Copyright of 1st Architects Ltd.



Protection Fleece: <ul style="list-style-type: none">- Material: Tensile geo-synthetic protection layer.- Thickness: 3.5mm.	Growing Medium: <ul style="list-style-type: none">- Material: low nutrient, free draining root zone.- Depth: 100mm substrate.
Drainage Layer: <ul style="list-style-type: none">- Material: Recycled PE rigid load tolerant drainage and retention board.- Depth: 20mm.	Sedum Blanket: <ul style="list-style-type: none">- Planting Mix: 8-12 Sedum Species specifically chosen for green roof applications.- Vegetation coverage at installation: Min. 90%.
Filter Fleece: <ul style="list-style-type: none">- Material: 2mm non woven geotextile.	Dry Weight: 57 kg/m2 Saturated Weight: 81 kg/m2



REVISION DESCRIPTION		REV	DATE	BY
 1st architects lse 1st Architects lse, Studio 1, 128 Robinson Rd, London, SW17 9DR T:0208 767 1311 E:london@1starchitects.com www.london.1starchitects.com				
CLIENT MR. J. WADE		SCALE 1:100 @ A3		
PROJECT RO 3 CLARENDON ROAD SW19 2DX		DATE Oct 2021		
DRAWING TITLE PROPOSED ROOF PLAN TYPICAL SEDUM ROOF DETAILS		BY JS		
STATUS PLANNING		JOB No. 20-518		
		DWG No. B-PR04C		