

**25 SHERFIELD GARDENS, LONDON, SW15
4PB**

Price £360,000 Leasehold



CHRISTOPHER ST. JAMES
Established 1976

Residential / Commercial / Land & Development

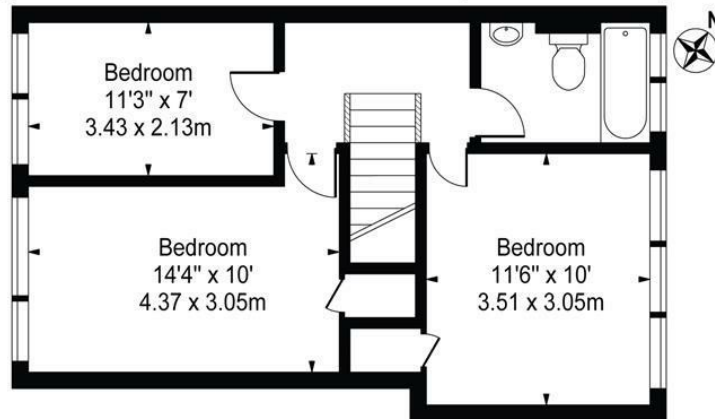
020 8296 1270

www.csj.eu.com

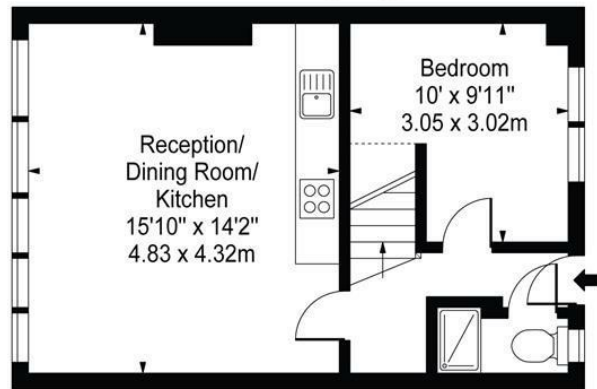
info@csj.eu.com

Sherfield Gardens, SW15

Approx. Gross Internal Area 867 Sq Ft - 80.55 Sq M



Third Floor



Second Floor

For Illustration Purposes Only - Not To Scale - Floor Plan by interDesign Photography
www.interdesignphotography.com

This floor plan should be used as general outline for guidance only.
All measurements are approximate and for illustration purposes only as defined by the RICS Code of Measuring Practice ©2016.

Description

**** Buy To Let Investors Only ****

Split level flat over second and third floors comprising open plan reception / kitchen, four bedrooms and two bathrooms. EPC Rating C

The property is currently let on an AST ending in May 2023 and produces £1,655 pcm which could be increased if let on a room by room basis which we understand has been done with a number of similar properties in this location

A virtual tour is available

Location

The property is well located for Roehampton University, local amenities, Richmond Park and good bus routes

VIEWINGS

Viewings available daily

Please contact our residential team on 020 8296 1270 alternatively by email

info@csj.eu.com



THE SMALL PRINT

Christopher St James, our clients and any joint agents give notice that:

- 1) They have no authority to make or give any representations or warranties in relation to the property. These particulars do not form part of any offer or contract and must not be relied upon as statements or representations of fact.
- 2) Any areas, measurements or distances are approximate. The text, photographs and plans are for guidance only and not necessarily comprehensive. It should not be assumed that the property has all necessary planning, building, regulation or other consents and Christopher St James have not tested any services, equipment or facilities. Purchasers must satisfy themselves by inspection or otherwise.