



**BORDON WALK
ROEHAMPTON, LONDON SW15**

Price £385,000 Leasehold



CHRISTOPHER ST. JAMES
Established 1976

Residential / Commercial / Land & Development

- Duplex apartment
- 4 Bedrooms
- Two Bathrooms
- Chain Free



DESCRIPTION

Duplex apartment over second and third floors comprising open plan lounge / kitchen, shower room, family bathroom and four good sized bedrooms ideal for a home or buy to let investment - Virtual tour available

PRICE

£385,000 Leasehold

LEASE

125 years from 29th January 1990 (93 years remaining)

CHARGES

Service charge £800 pcm

Ground rent: Peppercorn

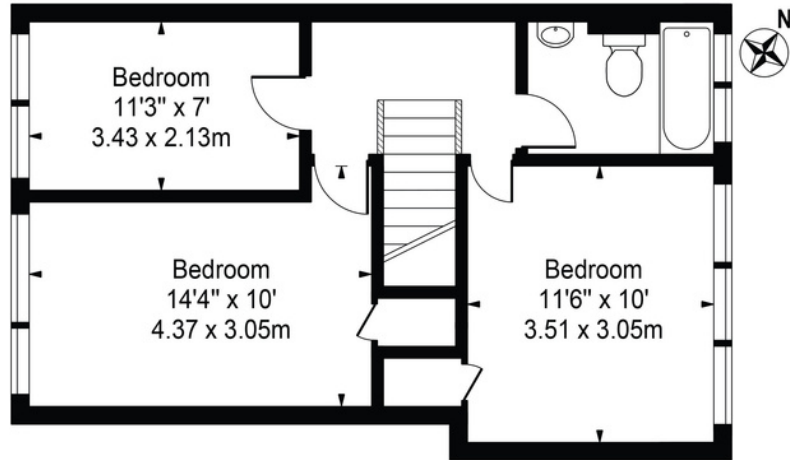
VIEWING

Contact sole agents Christopher St James on 020 8296 1270

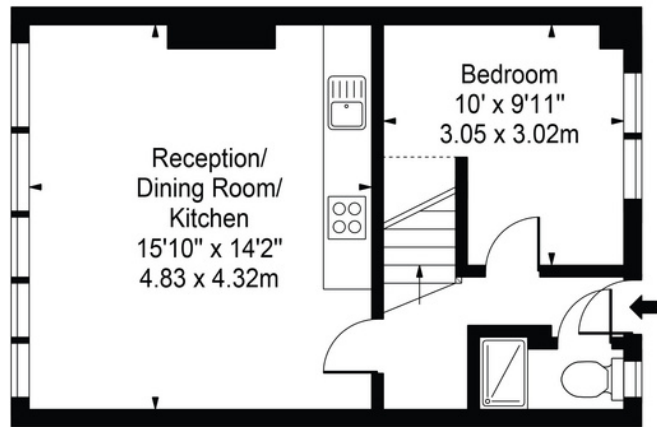


Bordon Walk, Roehampton, SW15

Approx. Gross Internal Area 867 Sq Ft - 80.55 Sq M



Third Floor



Second Floor

For Illustration Purposes Only - Not To Scale - Floor Plan by interDesign Photography
www.interdesignphotography.com

This floor plan should be used as general outline for guidance only.
All measurements are approximate and for illustration purposes only as defined by the RICS Code of Measuring Practice ©2016.



Score	Energy rating	Current	F
92+	A		
81-91	B		
69-80	C		
55-68	D	68 D	
39-54	E		
21-38	F		
1-20	G		

THE SMALL PRINT

Christopher St James, our clients and any joint agents give notice that:

- 1) They have no authority to make or give any representations or warranties in relation to the property. These particulars do not form part of any offer or contract and must not be relied upon as statements or representations of fact.
- 2) Any areas, measurements or distances are approximate. The text, photographs and plans are for guidance only and not necessarily comprehensive. It should not be assumed that the property has all necessary planning, building, regulation or other consents and Christopher St James have not tested any services, equipment or facilities. Purchasers must satisfy themselves by inspection or otherwise.