



**284 HEATHFIELD DRIVE, MITCHAM,
LONDON, SURREY, CR4 3RJ**

Price £260,000 Leasehold



CHRISTOPHER ST. JAMES
Established 1976

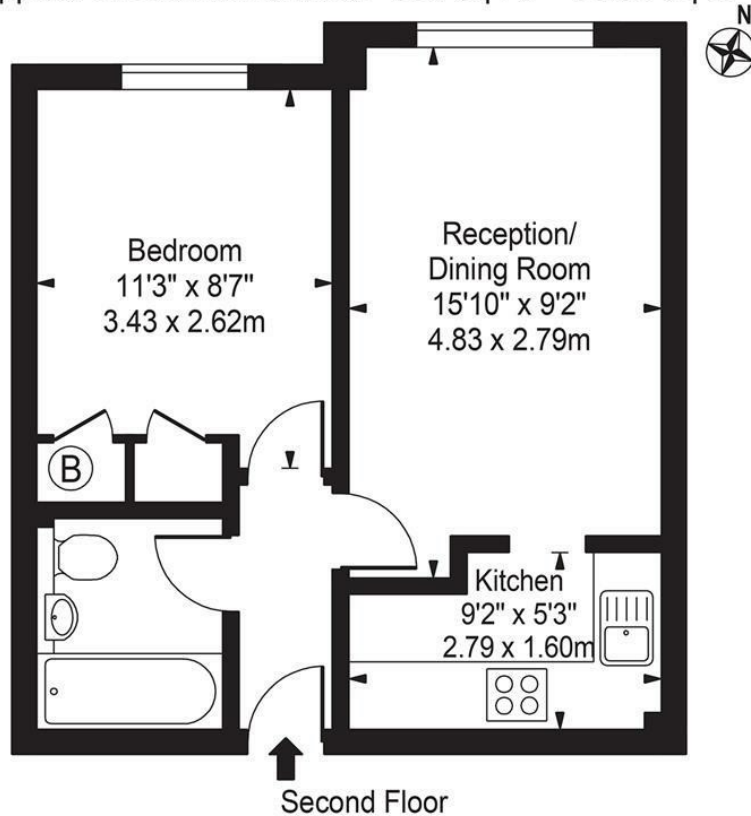
Residential / Commercial / Land & Development

020 8296 1270

www.csj.eu.com

info@csj.eu.com

Heathfield Drive,
Mitcham, CR4 3RJ
Approx. Gross Internal Area 362 Sq Ft - 33.63 Sq M



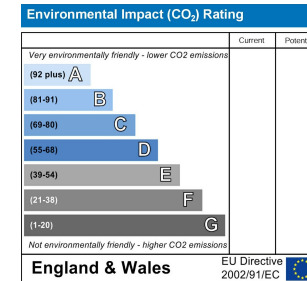
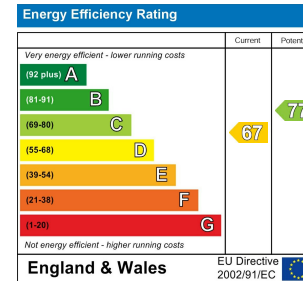
For Illustration Purposes Only - Not To Scale - Floor Plan by interDesign Photography
www.interdesignphotography.com

This floor plan should be used as general outline for guidance only.
All measurements are approximate and for illustration purposes only as defined by the RICS Code of Measuring Practice ©2016.

DESCRIPTION

!! CALLING FIRST TIME BUYERS AND BUY TO LET INVESTORS !!

One bedroom flat situated within a purpose built residential development located a short distance to both underground and overground train stations.



VIEWINGS

Viewings available daily

Please contact our residential team on 020 8296 1270 alternatively by email
info@csj.eu.com



THE SMALL PRINT

Christopher St James, our clients and any joint agents give notice that:

- 1) They have no authority to make or give any representations or warranties in relation to the property. These particulars do not form part of any offer or contract and must not be relied upon as statements or representations of fact.
- 2) Any areas, measurements or distances are approximate. The text, photographs and plans are for guidance only and not necessarily comprehensive. It should not be assumed that the property has all necessary planning, building, regulation or other consents and Christopher St James have not tested any services, equipment or facilities. Purchasers must satisfy themselves by inspection or otherwise.

Christopher St James
61 High Street Colliers
London
SW19 2JF



CHRISTOPHER ST. JAMES
Established 1976

Residential / Commercial / Land & Development

020 8296 1270
www.csj.eu.com
info@csj.eu.com