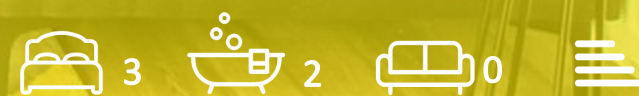


96a Merton High Street
Wimbledon, London, SW19 1BD
£599,000



96a Merton High Street, Wimbledon, London, SW19 1BD

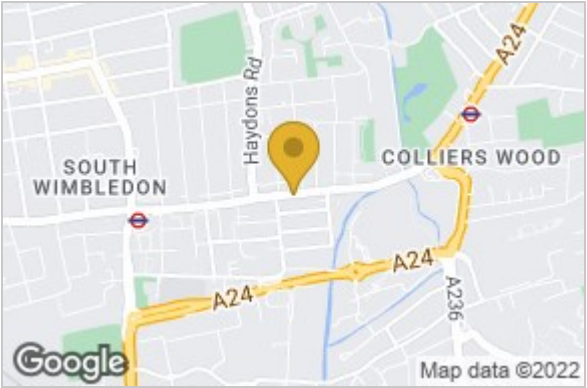
Three bedroom maisonette with private terrace situated within a brand new boutique development of high end apartments- Share of Freehold



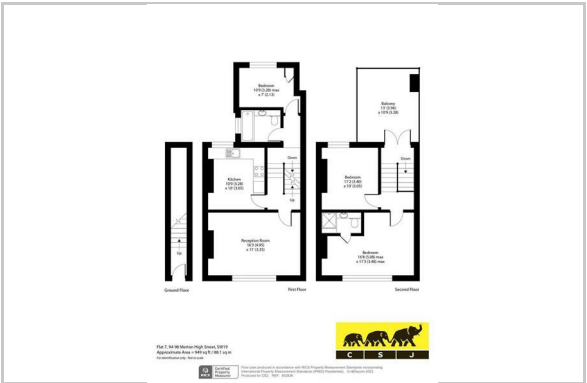
LOCATION
DESCRIPTION
SPECIFICATION



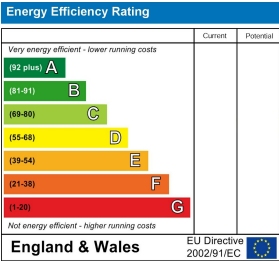
Area Map



Floor Plan



Energy Efficiency Graph



These particulars, whilst believed to be accurate are set out as a general outline only for guidance and do not constitute any part of an offer or contract. Intending purchasers should not rely on them as statements of representation of fact, but must satisfy themselves by inspection or otherwise as to their accuracy. No person in this firms employment has the authority to make or give any representation or warranty in respect of the property.